

THE Rattle

FALL 2011

OF THETA CHI

Extending a Helping Hand

A brother's story of tragedy and hope in Japan.

New and Improved

Theta Chi's redesigned website goes live.

Mark Murphy

President and CEO
Green Bay Packers



Editor

Bart Zino, *Iota Theta/Central Florida 2008*

Contributing Writers

- Al Calarco, *Eta Pi 1978*
- Jereme Grinslade, *Delta Kappa 1999*
- Eddie Higginbotham, *Eta Omicron 2010*
- Ben Hill, *Eta Kappa 2002*
- Doc Leland, *Eta Pi 1997*
- John McCullough, *Delta Omega 2007*
- Shawn Saiya, *Eta 2013*
- Kyle Weaver, *Zeta Sigma 2004*

Graphic Design

Jody Toth

Published by

Maury Boyd and Associates, Inc.

The International Headquarters is located at:

3330 Founders Road
 Indianapolis, IN 46268-1333
 PHONE: 317-824-1881
 FAX: 317-824-1908
 EMAIL: ihq@thetachi.org

WEBSITE: www.thetachi.org

To reach the Foundation Office, please e-mail the Director of Foundation Services at: foundation@thetachi.org

The Rattle is the official alumnus publication of the Grand Chapter of Theta Chi Fraternity. It is provided electronically to all undergraduate and alumnus members of Theta Chi chapters, colonies, and interest groups. Print editions are provided to: all active contributors to the Grand Chapter and/or to the Foundation Chapter; volunteers of the Fraternity; and undergraduate chapters. Individuals may request a printed copy by contacting the Editor at rattle@thetachi.org or by updating their information at www.thetachi.org.

Contributions

Story Submissions: *The Rattle* welcomes all story submissions. Decisions to publish submitted materials is at the sole discretion of the Editor.

Photo Submissions: Please share photos of your events! Both print and electronic publication requires photos to be captured at high resolution (minimum 300 dpi, and preferably 600 dpi). Set your camera to its highest setting for maximum file size. Please do not alter or try to correct the original capture. Doing so can permanently delete information that our production team will need to process the best picture for publication. Also, please use a flash to make sure the subjects are well-lit. Large photos can be posted to an FTP site or mailed to the editor on a CD. When you submit copy, photos or video for inclusion in *The Rattle*, you agree to allow Theta Chi Fraternity, Inc., The Foundation Chapter of Theta Chi Fraternity, Inc., and The Norwich Housing Corporation the right to post, publish, broadcast, print or otherwise use in any manner Theta Chi Fraternity, Inc. deems appropriate. All media submitted becomes the property of Theta Chi Fraternity, Inc.

Please send any materials for publication, as well as address changes, to the Editor at:

rattle@thetachi.org
 OR
 3330 Founders Road
 Indianapolis, IN 46268

With your support, Theta Chi keeps getting better



Dear brother,

With the return of college football, autumn colors and the arrival of the fall edition of *The Rattle*, our alumnus members fondly recall their undergraduate days in singing “Dear Old Theta Chi.” In our Fraternity we dearly hold to our traditions, but we are also a forward-looking and thinking organization.

In this issue, you will learn about several changes that are moving the Fraternity forward. Our online presence has been expanding, and our website www.thetachi.org has a fresh new look and improved content. Our partnership with OmegaFi has been fully implemented to create greater efficiencies at our Headquarters and to assist our chapters with managing their finances. Our odd-year summer leadership event has been retooled as The Initiative Academy, and I am proud to report that it was exceptionally well-received by the undergraduates who participated. Even *The Manual of Theta Chi Fraternity* was updated and improved, while still retaining its traditional look and feel.

All of these changes are possible due to the fact that our professional staff in Indianapolis continues to improve the business side of the Fraternity, our undergraduate members are continuing to grow and strengthen their chapters (recruitment and initiation numbers are the strongest they have been in decades) and our alumnus members continue to support Theta Chi with their time and resources. Despite an economy that remains lackluster, our Fraternity continues to grow and improve its financial condition. This allows us to do more and greater things for our members. It is also a testament to the fact that our members find real value in the ideals of Theta Chi Fraternity.

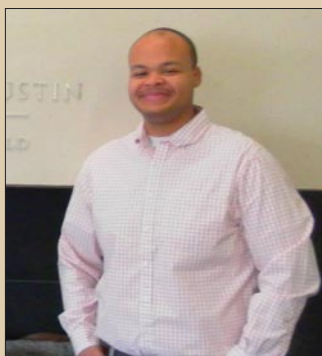
As we all work together to move the Fraternity forward, we should always remember the purpose of Theta Chi—to help one another become better men. As alumni we should also think back on our undergraduate days and remember how much the support of our alumnus brothers meant to us. I cannot stress enough how important alumni guidance is to our undergraduate brothers—our strongest chapters are those with sound alumni support. And if you are not able to work directly with your chapter, I will ask that you financially support the Fraternity with a contribution to our Foundation Chapter. Your generous gift will support leadership training for our undergraduate members as well as academic scholarships for deserving brothers.

Thank you for your continued interest in and support of Theta Chi. It is brothers like you who help to move our Fraternity forward. Please feel to write to me at nationalpresident@thetachi.org if you have any questions or comments regarding Theta Chi.

Most fraternal regards,

Douglas Allen
 National President





Dispatches from the Road

PAGE 7



Volunteering in Tohoku

PAGE 18



Chapter News and Notes

PAGE 33



Theta Chi's new website

PAGE 36



On the Cover

Green Bay Packers CEO Mark Murphy (Iota/Colgate 1977) with the Lombardi Trophy following the Packers' 31-25 win over the Pittsburgh Steelers at Super Bowl XLV in Arlington, TX. Read the full story on page 14.

- 5 **THE ROAD TO RHODE ISLAND**/Days after its centennial, Eta Chapter is reinstalled at the University of Rhode Island.
- 6 **NEW DIRECTOR AT IHQ**/Former LEC JD Ford returns to the International Headquarters staff as Director of Recruitment and Expansion.
- 8 **BEST OF THE BEST**/Theta Chi recognizes its top chapters and brothers.
- 10 **SHOW SOME INITIATIVE**/Doc Leland and Al Calarco reflect on The Initiative Academy's debut at Indiana University.
- 22 **ARE YOU READY FOR CONVENTION?**/A sneak peek at Theta Chi's 2012 Convention in Palm Springs, CA.
- 26 **NEW HOUSE ON THE BLOCK**/Delta Phi celebrates the completion of its new chapter house at the University of North Texas.
- 29 **ALUMNI NEWS AND NOTES**/Updates from Theta Chi's alumni.
- 38 **CHAPTER ETERNAL**/Theta Chi bids farewell to those brothers who have joined the Chapter Eternal.

We want to make you look good!

But we can't do that without strong photography. When producing *The Rattle*, we want to include only the sharpest, cleanest photos available. To do that, we have to enforce a few minimum requirements to maintain our magazine's standards. If your photos are of insufficient quality, they may not be published.

When taking photos:

- Always use a flash indoors
- Avoid taking photos that show or imply the presence of alcohol
- Do not edit or alter your images. *The Rattle* editorial staff can and will determine if an image needs color correcting or additional processing.

- Set your digital camera quality to its highest setting with the least compression. Photos that are less than 8 inches wide at 72 dpi, or that have a file size of under 1 megabyte may be too small for print production.
- Please send us the image file that is directly from the camera. Photos that are extracted from iPhoto albums, Facebook pages or Word documents have file sizes that have been compromised.
- Discourage your photo subjects from making inappropriate facial expressions or hand gestures: it looks childish and reflects poorly on the Fraternity's overall image

Dear brothers:

The 2010/2011 academic year was a period of significant growth for Theta Chi. Over the course of last year, our chapters initiated over 2,100 members, marking our best performance in 14 years. Our 2011 annual membership census results revealed that the Fraternity has more than 6,000 undergraduate members for the first time since 1997. This same report showed that our average chapter size is at a 17-year high.

This past spring, Theta Chi reinstalled two chapters: Eta at the University of Rhode Island and Psi at the University of Wisconsin. We also installed our newest chapter, Iota Xi at Georgia College and State University. The Fraternity entered the 2011/2012 academic year with over 10 colonies and interest groups, and the International Headquarters continues to receive regular inquiries about establishing new Theta Chi chapters.

Such strong growth means that more undergraduates view Theta Chi as an organization that can bring value to their lives. It also speaks to the commitment of our chapters, which seek to perpetuate the ideals of our Fraternity by admitting a greater number of promising young men to our ranks. With a larger membership base, our members have more opportunities to forge lifelong friendships and to benefit from the knowledge and experience of each other.

Both our undergraduate and alumnus members are to be credited for our recent growth. Our undergraduate members have made commitments to learning, planning, and executing successful recruitment strategies. They have also provided meaningful chapter experiences that have encouraged men to remain actively involved with the Fraternity throughout their collegiate careers. Our alumni have made significant contributions to these efforts as well, by offering sound guidance and advice, submitting recruitment referrals, and helping to pave the way for Theta Chi's expansion to campuses across the country.

Growth continues to be a top priority for Theta Chi. I call upon all brothers to contribute to these efforts in one or more of the following ways:

- Pass along the names and contact information of any promising undergraduates attending a university where Theta Chi is represented. The International Headquarters will forward your referral to the local chapter leadership.
- Volunteer to serve as an adviser or house corporation officer at a chapter near you. Need to find contact information for a chapter? You can write us at ihq@thetachi.org, fill out a Volunteer Interest Form, or visit our Chapter Directory online.
- Get involved in an effort to (re)colonize a campus on which Theta Chi is not presently represented. Write our expansion department at expansion@thetachi.org to find out what opportunities might be available near you.
- Make a tax-deductible gift to The Foundation Chapter, which supports our members through academic scholarships and educational programming. Through these scholarships and programs, we enhance the collegiate experience of our current brothers and make Theta Chi a more attractive choice to prospective members and their parents.

Many thanks to all of you who help make Theta Chi great by giving your time, talents, and/or financial support. Because of your involvement and efforts, our Fraternity can expect to see many more successes ahead.

Fraternally,



Michael Mayer
Executive Director



P.S.: I hope you will plan to attend Theta Chi's 35th School of Fraternity Practices and 156th Anniversary Convention from July 4-7, 2012, in Palm Springs, CA. Read more about the exciting programming that is being planned later in this issue.



Newly initiated Eta brothers and alumni celebrated the chapter's 100th anniversary in April outside Newman Hall, site of the former Eta chapter house. Newman Hall now serves as URI's admissions building. Theta Chi's badge can still be seen in the railing on the second floor. National Secretary Rich Partridge (second from right) served as installing officer.

Eta returns to Rhode Island

Editor's note: Eta Chapter was reinstated in April 2011, after the spring publication deadline. Please enjoy the full story below.

BY SHAWN SAIYA (ETA/RHODE ISLAND 2013)

A week and a day after the 100th anniversary of the founding of Theta Chi's seventh chapter, 28 men proudly accepted a charter for Eta once again.

It all began in September 2009, when Expansion Coordinators Corey Fischer and Jason Handberg came to Rhode Island to recruit Eta's first new members in 21 years. A group of nearly 15 men was assembled by early October and the first officer elections were held shortly thereafter.

With officers selected, Eta focused on growth. The interest group was ready to colonize in late February, but as the date drew nearer, Eta hit its first roadblock when the group shrank from 25 to nine. The timing sent a crippling blow to the remaining members' morale, and Eta scrambled to rebuild what was lost. The group nearly doubled in size by the February deadline.

Following colonization, Eta wanted to better establish itself on campus. While the colony was not permitted to participate in school-sponsored Greek programming at the time, Eta tried to make itself more visible to the Greek community. Whether it was having full participation at the American Cancer Society's "Relay for Life," supporting charity fundraisers hosted by sororities, or organizing campus-wide clean ups, Eta began to form a presence at URI.

Even though fall's recruitment efforts failed to yield numbers, they did bring quality. Eta was recognized as having the highest grade point average of Rhode Island's 12 fraternities on campus. This was a sticking point that Eta prided itself on when introducing Theta Chi to potential new members.

While a few of the recruits Eta went after had previously considered Greek life, many hadn't given so much as a thought to joining a fraternity. The majority of the current members had no intention of joining a fraternity until they were presented with Theta Chi. With that in mind, Eta continued to recruit others who possessed qualities that could greatly benefit to the fraternity.

In mid-spring, the colony officially received word during a charity fundraiser that Eta Chapter's petition had been approved. This news reaffirmed our group's enthusiasm and sense of brotherhood, and on April 30, 2011, Eta Chapter formally returned to campus.

A great deal is owed to the alumni who helped guide and steer Eta from its infancy up to its installation. They offered advice when asked, constructive criticism when they viewed it necessary, and motivated us with their own past experiences. They also contributed a great deal to the fundraising efforts that helped send members to various national events and assist with paying the rechartering and installation costs. Special thanks are due to Eta alumni Kevin "Rook" Chronley (1982), John Eastman (1962), Mike Testa (1963), and Gary Henry (Gamma/Maine 1980).

In May, Eta graduated its first two alumni in over two decades. They join the ranks of those who motivated and pushed us throughout the whole process. There isn't a brother of Eta who won't tell you that he was a better man before Theta Chi than he is now.

Theta Chi names Director of Recruitment and Expansion

Theta Chi Fraternity is pleased to announce the hire of James D. "JD" Ford as its new Director of Recruitment and Expansion.

A graduate of the University of Akron, Brother Ford manages the Fraternity's existing expansion efforts, and is responsible for identifying new expansion opportunities at campuses where Theta Chi is not currently represented. He also oversees the initial recruitment and education of colony members, monitors the progress of colonies and interest groups and, with the support of local alumni, ensures that they reach chapter status on or ahead of schedule. Brother Ford is additionally in charge of the Fraternity's recruitment education program.

Brother Ford is a member of the Beta Lambda chapter at the University of Akron. During his undergraduate years, he held the offices of Marshal, Philanthropy Chairman,

and First Guard. Brother Ford was named Brother of the Year, Beta Lambda's highest honor. After graduation he served as a Leadership and Education Consultant during the 2005/2006 academic year and was awarded a Citation of Honor for his work. As a consultant, JD's primary focus was expansion. He also assisted with a revitalization effort at Eta Phi/Oakland. Upon leaving staff, Brother Ford went back to school and earned a Master of Education degree with an emphasis in human services from Purdue University. Brother Ford stayed active as a Regional Counselor and Regional Director for the Ohio Valley Region.

Prior to joining Theta Chi in his current role, Brother Ford was employed by Eastern



JD Ford

Gateway Community College's Office of Project Hope as a Student Advisor. Before that, he was the Assistant Director for Residential Education in the Office of Housing and Residential Education at Purdue University-Calumet. He has also worked as a Hall Director for Ohio Dominican University.

"We are thrilled to welcome JD back to the International Headquarters staff," Executive Director

Michael Mayer said. "His prior experience on the professional staff coupled with his background in higher education makes him a great fit for this position."

Theta Chi by the Numbers

All stats as of August 31, 2011

	2005	2006	2007	2008	2009	2010
Average Chapter Size	36.4	35.6	38.4	41.2	42.2	44.7
New Members	1852	1840	1933	2224	2393	2446
Undergraduate Members	4769	4664	5026	5351	5480	5726

Expansion update

Alpha Upsilon/Nebraska	44
Beta Iota/Arizona	35
Gamma Zeta/Oklahoma State	29
Zeta Mu/American International	15
Zeta Rho/Kentucky	28
Louisiana State University	41
Florida International University	25
University of Illinois-Chicago	12

Top 10 recruiting chapters for 2010/2011 academic year

- Tau/Florida: 55
- Iota Theta/Central Florida: 53
- Gamma Rho/Florida State: 49
- Theta Epsilon/Kennesaw State: 41
- Alpha Phi/Alabama: 39
- Iota Beta/Missouri State: 39
- Alpha Iota/Indiana: 38
- Beta Delta/Rutgers: 36
- Iota Mu/Missouri: 33
- Gamma Kappa/Miami OH: 32

All it takes to make a difference!

MYLC 2010/2011 participation
809

DPC 2011 participation
261

June 2011 IA participation
50

August 2011 IA participation
53

Active chapters as of 8/2011
128

Colonies as of 8/2011
5

Interest Groups as of 8/2011
3

Number of Chapters with advisor as of 8/2011 = 121

Eddie and fellow LEC Jimmy Cox visit the University of Texas Visitors Center. They spent six weeks with Delta Mu working on recruitment and chapter operations training.



Dispatches from the Road:

Look at your life; look at your choices: Why Theta Chi?

BY EDDIE HIGGINBOTHAM, IV (ETA OMICRON/NORTHWESTERN STATE 2010), LEADERSHIP AND EDUCATION CONSULTANT

“You’re hired. We need you to go to the University of Texas in two weeks to help save the chapter. Go!”

There I stood, phone pressed against my ear, jaw dropped, and eyes the size of golf balls the day before I was to walk across the graduation stage at Northwestern State. As one could imagine, I was filled with a whirlwind of emotions after I learned that I would be working for Theta Chi as a Leadership and Education Consultant—a dream of mine for the last two years of college—and that I would be stationed in Austin, TX, doing an expansion project with mentor and fellow consultant Jimmy Cox (Alpha Delta/Purdue 2010).

As I quickly discovered, doing a chapter visit and doing an expansion project are very different from one another and each presents its own unique and special challenges.

As undergraduates, we often have something tangible to show with our Theta Chi sales pitch. It could be a display case full of awards, an impressive chapter house, or simply even another brother that can passionately vouch for what the Fraternity stands for. In expansion, you have few, if any, of those things. Prospective new members have no idea who you are and no real reason to trust you, and you only have one chance to sell them on why they should join Theta Chi. This turned everything that I ever knew about recruitment upside down.

The problem that I faced is the same that many of us do: we know how much Theta Chi means to us, but we are usually never asked to articulate it. In some instances, we feel like we can’t articulate it; it’s just too hard to put into words. This realization forced me to seriously reflect on my



Thanks to the combined efforts of Eddie, Jimmy, local alumni and nearby chapters, Delta Mu initiated 28 new members on May 6.

Theta Chi experience and evaluate everything that I’ve been through. I thought about why I joined Theta Chi: the good and the bad, successes and failures, lessons I learned along the way, and most importantly, the growth that had taken place throughout my undergraduate membership. As I started to relive my personal journey in Theta Chi, I thought “That’s it! That’s the answer!” What if, instead of having this

elaborate sales pitch, I would simply tell people why I joined?

The lesson I learned and the wisdom that I would like to share with you is the importance of reflection and remembering why you joined Theta Chi in the first place. I charge all of my brothers to take the time to reflect, evaluate and build upon their experiences, and to share that message with others. In the first line of our Creed, we all say, “I believe in Theta Chi...” — take the time to know and articulate why.

Look at your life, look at your choices. Every choice that you make has a direct impact on your life. As I reflect on my life and the choices that have shaped it thus far, one choice stands out more than any other—my decision to join Theta Chi Fraternity. Your strongest recruiting tool is your personal story based on your choice to join. Do you know yours? ■

Award winners for 2010/2011

This year's awards were presented at the June and August Initiative Academies. For a complete list of award descriptions, visit www.thetachi.org/main/resources.

Reginald E.F. Colley Award

Winner: Cory Loveless (Phi/North Dakota State 2011)

First runner-up: Peter Tomasek (Zeta Beta/Adrian 2012)

Second runner-up: Beau Slayton (Delta Alpha/Linfield 2011)

James Ralph "Shug" Jordan Award

Winner: Chris Bodle (Zeta Lambda/Westminster 2011)

Runner-up: Chris Lawrence (Psi/Wisconsin 2013)

Howard R. Alter, Jr. Award for Chapter Excellence

Phi/North Dakota State
Alpha Nu/Georgia Tech
Epsilon Kappa/Idaho
Zeta Beta/Adrian
Zeta Lambda/Westminster
Iota Beta/Missouri State
Iota Theta/Central Florida
Iota Lambda/Longwood

James M. Holland Award

Winner: Tau/Florida—55 initiates

First runner-up: Iota Theta/Central Florida—52 initiates

Second runner-up: Gamma Rho/Florida State—49 initiates

Phil S. Randall Award

Iota/Colgate—25 initiates

Rho/Illinois—25 initiates

Tau/Florida—55 initiates

Phi/North Dakota State—27 initiates

Chi/Auburn—27 initiates

Alpha Gamma/Michigan—31 initiates

Alpha Iota/Indiana—38 initiates

Alpha Nu/Georgia Tech—31 initiates

Alpha Omicron/Washington State—30 initiates

Alpha Phi/Alabama—39 initiates

Beta Delta/Rutgers—36 initiates

Gamma Kappa/Miami (Ohio)—32 initiates

Gamma Rho/Florida State—49 initiates

Delta Mu/Texas—28 initiates



Past National President Carlton Bennett and Executive Director Mike Mayer congratulate Chris Hixon (Iota Theta/Central Florida 2014) and Mike Obermeyer (Iota Theta/Central Florida 2013) on their Alter Award win. This is Iota Theta's fifth consecutive Alter Award win in its five-year history.

Delta Upsilon/Arizona State—28 initiates
Eta Omega/Chico State—26 initiates
Theta Epsilon/Kennesaw State—41 initiates
Theta Iota/UC-Santa Cruz—28 initiates
Iota Beta/Missouri State—39 initiates
Iota Theta/Central Florida—53 initiates
Iota Mu/Missouri—33 initiates

Henry B. Hersey Significant Increase in Membership Award

Winner: Delta Mu/Texas—7 members in 2010 to 21 in 2011 (200 percent increase)

Honorable mention: Theta Epsilon/Kennesaw State—27 members in 2010 to 61 in 2011 (126 percent increase)

**Disclaimer for Holland, Randall, Hersey awards: Winners were determined based on the number of paid initiates reported to the International Headquarters as of April 10, 2011.*

Grand Chapter Scholarship Award

Winner: Gamma Eta/Bucknell

Sidney Ann Gilpin Lewis Award

Winner: Delta Phi/North Texas

Runner-up: Alpha Delta/Purdue



Executive Director Mike Mayer presents Justin Novacek (Epsilon Kappa/Idaho 2014) with the Alter Award at the June Initiative Academy. This is Epsilon Kappa's first Alter Award win in three years, and their fifth overall.

Cory Loveless named 2011 Colley Award recipient

BY BART ZINO, EDITOR



Cory Loveless

North Dakota State University's Cory Loveless, a double major studying math and math education, has developed an impressive resume as a student leader, scholar and mentor to others. Originally from Grand Forks, ND, he is a member of the Blue Key National Honor Society and is a charter member of the NDSU Campus Club of Lions Club International. In 2010 alone, he was named Student Leader of the Year by the Congress of Student Organizations, Greek Man of the Year by the NDSU Interfraternity Council (IFC), and was voted Homecoming King.

On campus, Brother Loveless immersed himself in leadership. He was a Student Staff Leader for

NDSU's Summer Leadership Institute in 2009 and 2011, was a student leader on the Conference, Orientation and Recruitment (COAR) Team in 2010, and has been a student member of the Complaint Resolutions Board since 2008. Also an active member of NDSU's Greek community, Loveless served as IFC Secretary/Treasurer in 2010 and currently serves as Vice President.

Brother Loveless has gained the trust and respect of his chapter brothers at Phi as well. He was elected to the position of Treasurer in 2009 and

President in 2010. After a successful term as President, his brothers elected him to the position of Marshal.

"Cory has always exemplified what it means to be a Theta Chi," Phi Chapter president Joseph Heruth said. "He has played an instrumental role in the recruitment and leadership training of many of our most prominent members, and his dedication to Phi Chapter has been unfaltering. Mr. Loveless is my brother, my friend, and I can't think of a single person more deserving of this honor."

This year's Colley Award applications were reviewed by a committee composed of top Theta Chi alumni from around the country, including past Colley Award recipients. The committee reviewed hundreds of pages worth of applications submitted by applicants from around the country, including Missouri State University, Texas Tech University, the University of Illinois, and the University of Tampa, among others. The committee was chaired by Theta Chi National Board Member William W. Palmer.

"It was an agonizing process, evaluating so many top applications from around the country," Palmer said. "Every one of those young men was outstanding. A handful stood out and Cory's was the best of the best."

First presented in 1929, the Colley Award is named for Reginald E.F. Colley, a World War I veteran and past member of the Grand Chapter. It is interesting to note that brothers Colley and Loveless share the same alma mater. As a member of Phi Chapter, Brother Colley developed a celebrated reputation as a campus, community and civic leader. He graduated in 1915 and eventually headed overseas to fight for the U.S. Army on the Western Front. Brother Colley died at the age of 39, but his legacy of leadership continues to inspire future generations of talented Theta Chis.

Chris Bodle wins Shug Jordan Award



Chris Bodle

Zeta Lambda Chapter's Chris Bodle, a 2011 graduate of Westminster College, has been named this year's winner of the James Ralph "Shug" Jordan Award.

Brother Bodle, a chemistry major from Clearfield, PA, was a member of the Westminster varsity swim team. He earned varsity letters in 2009, 2010 and 2011 and was a two-time recipient of the Coach Gene Nicholson Scholar-Athlete Award.

He is also an outstanding student, earning a 3.58 GPA throughout his college career. He is a recipient of the Society of Analytical Chemists of Pittsburgh Achievement Award for Chemistry, graduated with honors, and presented his senior research project at the American Chemistry Society's national convention in Anaheim, CA.

Brother Bodle was also a well-liked member of his chapter. He served as Social Chairman and was known to lend a hand fixing things around the chapter house. He is also an Eagle Scout and was a

worship team leader for Westminster's Sunday praise and worship band.

Named for former Auburn University Tigers coach James Ralph "Shug" Jordan, the Shug Jordan Award is presented annually to Theta Chi's top scholar-athlete. Consideration for this award is by application only and is reviewed by a committee of Theta Chi alumni. Past National President Patrick T. O'Connor chaired this year's committee.



Coach James Ralph "Shug" Jordan (Chi/Auburn 1932), for whom the Shug Jordan Award is named, was head coach of the Auburn University Tigers from 1951 to 1975.

Photos by Fraternity Composite Service



LEFT: Team members work together to decipher a clue during Saturday's Amazing Race. Teams worked together to complete a series of tasks at different locations around the Indiana University campus. CENTER: Participants take a break between small group sessions at the August Initiative Academy. From left to right: Kyle Cavorley (Beta Delta/Rutgers 2014), Immon Shafiei (Beta Delta/Rutgers 2014), Josh Rhodes (Theta Omegal/Appalachian State 2014) and Dan Karlin (Beta Delta/Rutgers 2014). TOP RIGHT: The Orange Team gets warmed up for another day at The Initiative Academy. A unique aspect of this event is the emphasis on small group interaction, teamwork and hands-on learning. BOTTOM RIGHT: Faculty member Doc Leland leads a small group discussion during the June Initiative Academy.

The Courageous Experiment

Theta Chis think outside the box at the first Initiative Academy

BY RICHARD W. "DOC" LELAND (ETA PI/EAST STROUDSBURG 1997) AND AL CALARCO (ETA PI/EAST STROUDSBURG 1978)

One of our Fraternity's oldest and most cherished traditions is gathering at our national events. Generations of brothers have benefited from these experiences more than any one of us could put into words. Inevitably, we must be prepared to adjust some of these traditions to help Theta Chi meet new and ever-changing responsibilities. Last year, for example, we updated the Ritual, our most sacred tradition. And this year, we took a look at another staple of the Theta Chi experience: our educational system.

This is a story of change and of a courageous experiment designed to energize our leadership education and help us get back to the basics of brotherhood. It is a story with a positive ending for our Fraternity and the young men we call brothers.

A small group of us did some thinking outside the box, and we decided to go for it. We rolled the dice and replaced the 26-year-old Chapter Leadership Conference (CLC) with a new opportunity—The Initiative Academy. We based it on the best of brotherhood: intimate, experiential, ever-growing, and ever-enhancing leadership, and we experienced it together at the Alpha Iota chapter house at Indiana University.

For four days and three nights, close to 70 undergraduates and volunteer faculty members lived together under one roof so we could look like and work as a chapter might—in small groups, navigating and completing challenges where we would likely encounter many of the problems any chapter might encounter. To round out the experience, we cooked up some new and unique

challenges that could only be met with trust, honesty, and ultimately, leadership.

We knew we were doing something different and that each of us would have to become comfortable with a certain inevitable confusion. Early on, we accepted the mantra, "everything is curriculum." And it was: from getting the guys registered and settled in, to our first interaction outdoors finding the two or three brothers with something in common other than Theta Chi, we braved the heat and humidity to build brotherhood anew.

In small groups, we were charged with coming up with a mission statement, and we were to depict that mission in the form of a badge. We learned that some of us can draw (most of us can't); but all of us share a vision and a direction. We regrouped; we tightened the bond of the whole; we went to bed exhausted.



The next day, we shared breakfast at 8 a.m. sharp and then it was off to the races again.

All in all, we experienced frustration and learned to manage it, move on, and prevail. We discovered how to laugh; how to manage pressure; how to trust our brothers, even when it doesn't seem easy. It was all there, and there in abundance.

You might say all of this was to set the stage for the culminating event: the amazing race. While we were [mercifully] only observers, we had never seen anything quite like this before. The challenges were physical to be sure, but even more challenging in that you could only find the location of the challenge using a set of cryptic clues that had to be deciphered by the group. There was more pressure (it was a race, after all) and more frustration (it was hot; it was humid), but by this point, we knew

that what was needed was not an individual hero to lead the charge, but a collective strength. Each member left The Initiative Academy having identified his own style of leadership and a sense of knowing that he can now lead and make an impact on the Fraternity and beyond.

We can't speak for all who attended, but we can say that this experience ranks as one of our most memorable: one whose memory we shall cherish; and one that we are confident promoted the best of what we are as brothers of Theta Chi. We cannot tell the brothers of the Academy how grateful we are, how indebted we will remain, for all that they taught us in the four days it was our privilege to be with them. We worked, we played, we came to know and respect each other, and, we think, to love each other as well. ■



View the video of the June Academy at:
http://www.youtube.com/watch?v=z-iDcj_SpeE



Eighteenth edition of *The Manual of Theta Chi* now available

BY BEN HILL, SENIOR DIRECTOR FOR COLLEGIATE SERVICES

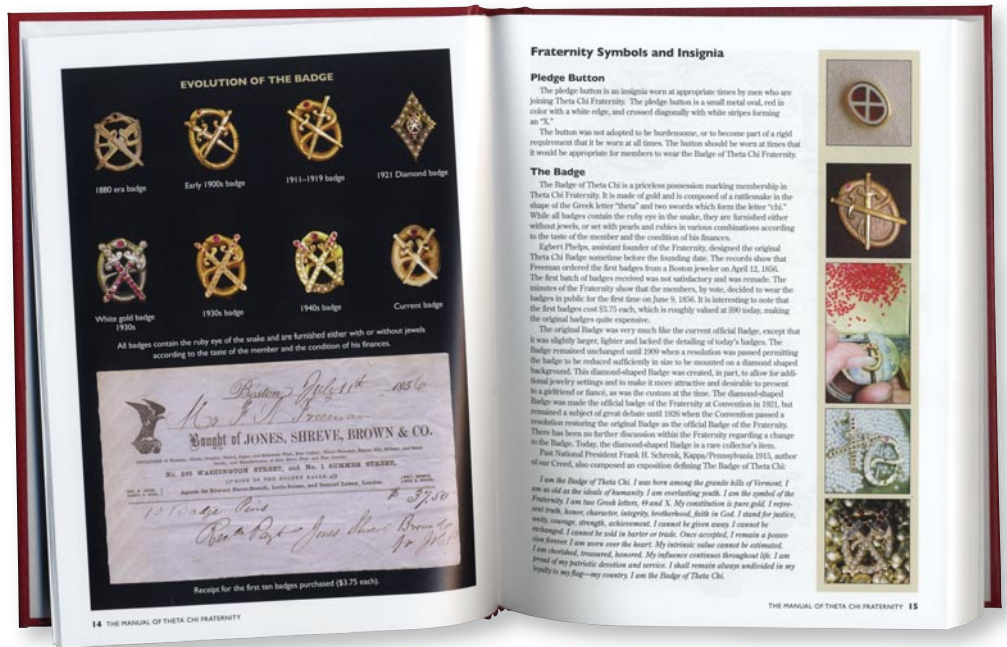
In September 2009, when I was approached by then-Executive Director Dale Taylor and Mike Mayer about revising *The Manual of Theta Chi Fraternity*, I naively accepted the responsibility.

“This will be easy,” I thought, “just a few quick updates and this will be ready to publish—we’ll be ready to have this done by December and shipped out in January 2010.”

As I began work on this humble task I started to realize just how much time and energy would be needed, noting that the completion date would be a floating target.

I began the task by grabbing a copy of the seventeenth edition and marking errors and taking notes on the individual pages of the book. While searching for typos that needed to be corrected, it was astonishing to see how much had changed within the Fraternity and how much of the information had become outdated. It overwhelmed me to see how much the Fraternity had accomplished in 10 years—(re)installations, Conventions, Deranian Presidents Conferences, Chapter Leadership Conferences, awards, etc.—and it devastated me to find that this information was not easily accessible.

Revising *The Manual* brought two unique challenges. The first was that the last edition had been published in 1998. Obviously a lot had changed not only within Theta Chi, but also in the world. The seventeenth edition had been completed using old techniques and formatting for publication—nothing had been digitized. None of the photos used in the seventeenth edition were readily available in an electronic format, and in most cases, the original photo was also nowhere to be easily found. I believe Indiana Jones had an easier time finding the Holy Grail. So I hunted through decades of items and artifacts in our archives and probably flipped through nearly every edition of *The Rattle* that the Fraternity has ever published in search of photographs and information.



After meeting with our publisher, we discovered that due to the non-digital format of the seventeenth edition, it would actually be more cost effective for Theta Chi to create a new version than to simply update the seventeenth edition.

I recall asking for clarity, “so it’s actually cheaper to make a whole new book than to just modify this old one?” So I elected to create something new while keeping the strongest and most traditional parts from the previous editions of our manual.

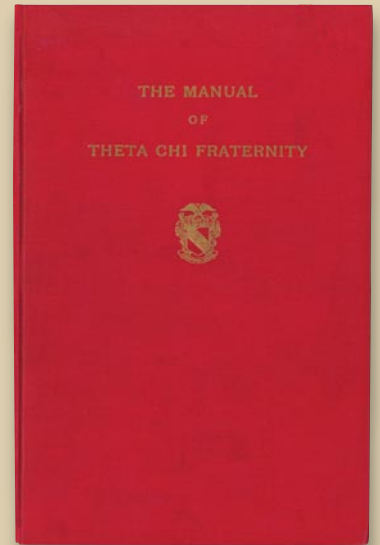
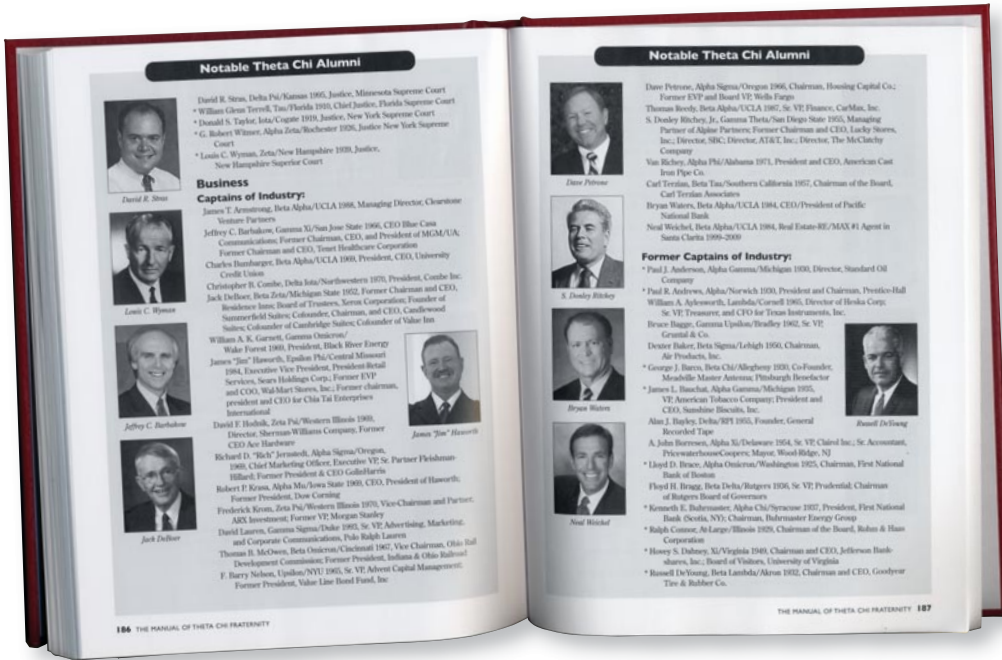
The second challenge was trying to actively perform my other specific job responsibilities at the International Headquarters at the same time that I was working on the revisions. I still needed to maintain contact with our Leadership and Education Consultants while they were on the road, push and encourage colonies to reach the goals for (re)installation and recruit new brothers to serve as LECs. I recall one disciplinary incident that occurred

on the East Coast that required me to leave the Headquarters to address the situation. While discouraging, this delay may have helped to spur some creativity that would lead me down the path to creating the eighteenth edition.

New features

This new edition features a wider size when compared to the previous editions, which allows for the inclusion of additional content and photographs and also aligns better with today’s laptops and tablets, making it easier to carry. Color was utilized to best exhibit Fraternity insignia, awards, and other items and allowed for the inclusion of great photographs of historical figures and events.

The inside cover provides a record for the individual member to fill out, and has been lengthened with additional fields so that he may continue to fill it out and complete it

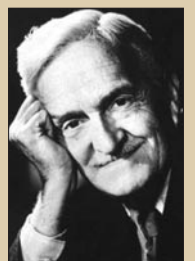


The first edition of *The Manual of Theta Chi Fraternity* was published in 1947 and edited by George Chapman (Omega/Penn State 1920) along with supplemental information provided by George Starr Lasher (Alpha Gamma/Michigan 1911). Subsequent editions were edited by Dale Slivinske (Gamma Sigma/Duke 1968) and Dave Westol (Beta Zeta/Michigan State 1973).

Thousands of brothers have benefitted from their expertise and knowledge when they first received their copies of the Manual and likely referred to it later in life as alumni.



George Chapman
Omega/
Penn State 1920



George Starr Lasher
Alpha Gamma/
Michigan 1911

after graduation. Based on feedback from Theta Chi undergraduates, I shifted the organization of the *Manual* to have a more traditional textbook feel with topical chapters that featured discussion questions at the end.

The eighteenth edition of the *Manual* includes 14 chapters covering a wide span of information ranging from basic expectations of members to our symbols, insignia and traditions, history, national governing structure and basics of chapter operations.

There is a chapter titled "Individual Resources," which is an updated reprinting of the Manners and Etiquette section originally written by George Starr Lasher for the first edition of the *Manual*.

This edition also features a comprehensive list of every chapter ever installed, along with a list of important historical dates, achievements, and notable alumni. Toward the back is a list of all of Theta Chi's known notable alumni, as well as a directory of undergraduate chapters and regions, and an appendix and extensive index provide a wide array of historical information.

Special Thanks

I could not have done this on my own by any means. Mike Moxley, Susan Casalini, and Jody Toth, of our publisher Maury Boyd &

Associates, were very patient with me throughout this process and provided their time, talents, guidance and motivation to help me complete this task. My thanks also must go to the International Headquarters staff for assisting me in compiling all of the data and records to update this edition. Their attention to detail and loyalty to the Fraternity is reflected in the pages of this new edition.

I would like to specifically thank National President Doug Allen for sharing photos and contributing to the revisions of the history section, Past National President Pat O'Connor for his input on Chapter Resources, Bill Simpson for his assistance with Notable Alumni and *Rattle* editor Bart Zino for his many hours spent editing. I am additionally grateful to Executive Directors Dale Taylor and Mike Mayer for their support, encouragement and direction during this project. A very special thanks also goes to my wife, Erin L. Hill, who took the time to read through the *Manual's* many drafts, offer suggestions, and edit and correct her husband's many mistakes (all while being pregnant with our daughter!).

While the book has changed from what you may remember, I trust that you will enjoy the changes that have been made. I hope that all pledges, current undergraduate members and alumni find this a helpful resource and a source of pride. ■



From player to negotiator to executive, Mark Murphy has always had a solid

Game Plan

BY KYLE WEAVER (ZETA SIGMA/WISCONSIN-RIVER FALLS 2004)
RATTLE CONTRIBUTING WRITER

Hardcore Green Bay Packers fans know who Mark Murphy is. So do hardcore Theta Chi trivia buffs.

In the National Football League's smallest city, Brother Murphy (Iota/Colgate 1977) is a household name alongside players Aaron Rodgers, Charles Woodson and Clay Matthews.

Since early January 2008, Murphy has served as CEO/president of the Packers, providing leadership to both the Packers organization and the NFL itself. And if 2011 is any indicator, both entities are getting more than their money's worth out of Murphy's leadership skills.

On February 6, 2011, the Packers team claimed its 13th league championship and fourth Super Bowl victory at Super Bowl XLV. Some five months later, Murphy, a former Washington Redskins safety and NFL Players Association representative, played a key role in resolving the NFL lockout and keeping the 2011 NFL season on schedule.

Serving on the NFL's labor negotiations committee, Murphy's career experiences as a federal trial attorney, a former NFL player, an NFL players union representative and an athletics executive were touted by many as instrumental in helping the league's players and owners reach a new collective bargaining agreement last July.

"Mark's rare blend of experiences make him integral to the future of the Packers and the NFL," NFL Commissioner Roger Goodell said in a biography on Packers.com. "His accomplishments as an NFL player, his work with the NFLPA, and now his leadership of the Packers, provide a unique perspective to the league and also to the players."

Formative years

Born in Fulton, NY, Murphy lived in the Houston area with his family before returning to New York. Because his father worked in labor relations, Murphy said he "grew up around collective bargaining," a fact that likely contributed to his later career.

As a teen, Murphy was an accomplished athlete. He played baseball, basketball and football at Clarence Central High School and was recognized as the best all-around athlete in Western New York during his senior year. As he entered Colgate University, he was being scouted by Major League Baseball for his baseball talents and continued to play three sports

It no doubt takes a lot of leadership skill to make changes in an organization as large as the Green Bay Packers, but they are skills Murphy has honed for many years along his career path.

while in college. But he found the most success playing football.

"Colgate was at a much higher level in football than anything else," Murphy said. "It was a better fit for me."

As most undergraduates who join fraternities do, Murphy made personal connections with several Theta Chi members before he joined. He was a member of the Colgate basketball team and several of his teammates were also Theta Chi members.

"In those days, Theta Chi had the reputation of being the basketball fraternity at Colgate," Murphy said.

Murphy went through formal recruitment in the spring of his freshman year and moved into the chapter house as a sophomore. He served as his chapter's historian and washed dishes in the chapter kitchen in exchange for a meal plan.

"I had a good experience at Theta Chi," he said.

Murphy puts a premium on the value of education and touts both the lessons he learned from interactions with his teammates and with his fellow Theta Chi brothers as essential components of his education. Murphy graduated from Colgate with a bachelor's degree in economics in 1977.

"I got a great education at Colgate," Murphy said.

Breaking into the NFL

Upon his graduation, a few NFL teams expressed an interest in drafting Murphy, but it wasn't a given that he would make it. Several teams wanted Murphy, a safety, to bulk up and play linebacker.

Washington Redskins head coach George Allen, though, wanted him as a safety.

During the 1977 draft, Allen called Murphy and asked him to come to Washington and told him the team was interested in drafting him. As it turned out, the Redskins indeed wanted him, but they didn't want to draft him. Instead, Allen and the Redskins hoped he would avoid the draft so they could sign him as an undrafted free agent.

The team essentially "wanted to hide me out," Murphy said. "That was my 'welcome to the NFL' moment."

At the time, Murphy said, the Redskins had a reputation for not liking rookies and preferred to trade away their draft picks. In what was then a 12-round draft, hiding players from other teams wasn't so uncommon, though the tactic is no longer allowed.

After his sobering entry into the league, Murphy found success in the NFL. He played a total of eight years, his entire on-field career, with the Redskins.

Murphy took on leadership roles both on and off the field for the Redskins organization. He served as co-captain of the team from 1980-84, helped the Redskins win the 1982 Super Bowl and earned Pro Bowl honors in 1983.



The photo, found in the 1979 Winter Rattle, shows Mark Murphy after two seasons with the Washington Redskins. Murphy completed eight seasons in the NFL, all with the Redskins.



This photo from the Fall 1993 Rattle shows Mark Murphy (left), then athletic director for Colgate, with Theta Chi brothers Al Bulliner (Beta Sigma/Lehigh 1965) and Dan Burger (Delta Eta/Colorado State 1973) at an alumni reception during the fifth Chapter Leadership Conference. Mark was Iota's chapter adviser and spoke as the keynote speaker at the conference.

Murphy served as the Redskins team representative to the NFL Players Association and was the union's vice president through 1983-84. He served on the union's bargaining committee during the 1982 strike and, among the league's players and owners, gained a reputation as a staunch negotiator.

"Back then being the union representative was considered to be like smoking cigarettes; it was damaging to your career," Murphy said. "They were different times."

While still playing for the Redskins, Murphy continued to further his education, both because it was something he valued and because he saw himself having a career beyond the NFL.

"I never felt completely secure (with my career in the NFL)," Murphy said. "It was a good way to help myself."

During his first off-season with Washington, Murphy began working on his Master of Business Administration in finance from American University. He took courses full-time in the spring semester and one or two courses during the summer and fall; he received his degree in 1983.

"Back then, the demands on a player's time weren't what they are now," Murphy said.

His educational work paid off. After his final season in the NFL in 1984, Murphy accepted a position working as the NFLPA's assistant executive director, helping resolve a second players' strike in 1987.

"A lot of it is simply having good people skills, being an effective communicator and a good listener" —Mark Murphy

While working for the players union, Murphy earned his law degree from Georgetown University in 1988. He parlayed that into a legal career working as a trial attorney from 1989-1992, primarily defending U.S. government agencies in lawsuits. In particular, Murphy represented the U.S. Census Bureau in several appeals of the 1990 Census. It was this legal experience that helped teach him valuable public speaking and advocacy skills.

"For a young attorney, that was very exciting," Murphy said.

After his years as an attorney, Murphy was drawn back into the world of athletics.

In 1992, Murphy was hired by his alma mater to serve as athletic director. While at Colgate, Murphy moved into a house three doors up from the Iota chapter house and served briefly as chapter advisor.

During his 11 years at Colgate, Murphy ushered in a number of facility renovations and helped re-establish the football program. The team went from 0-11 in 1995 to making three consecutive appearances in the NCAA I-AA playoffs, including a championship game appearance in 2003—a notable accomplishment for a non-scholarship program.

"I hope I left the athletic programs in better shape than when I started," Murphy said.

In 2003, he moved to the Chicago area to become athletic director at Northwestern University, a Big Ten campus with more than 15,000 graduate and undergraduate students, 19 varsity sports and a \$40 million athletics budget.

At both schools, Murphy said he is as proud of the athletes' academic accomplishments as he is of their on-field accomplishments. Both universities recorded high graduation rates among student-athletes with Murphy at their helms.

Winning a Super Bowl

In only his fourth year as CEO/President of the Packers organization, Murphy went along for the ride as the Packers reached the pinnacle of their sport during an unlikely post-season run after the team went 10-6 and earned a sixth playoff seed.

For Murphy, winning a Super Bowl last season was an incomparable experience.

Though the win makes him the only person in NFL history to win a Super Bowl title as both a player and a team's top executive, Murphy was far more excited for the players and the fans, especially because the win was fairly unexpected that season.

"I was very excited for our fans," Murphy said. "The fans are way supportive of this team the way they travel to away games. . . . Obviously it was very exciting. Everything happened so fast it's a blur."

When he was handed the Vince Lombardi Trophy in Dallas, Murphy's only concern was to get the trophy into the hands of Green Bay Packers General Manager Ted Thompson as quickly as possible.

"Ted has really had the autonomy to put together his team," Murphy said. "I just felt it was important for him to hold [the Lombardi Trophy]."

Upon returning to Green Bay after the Super Bowl, Murphy and the Packers held a Return to Titledown event at Lambeau Field, the Packers' stadium. There had been a fairly significant snowstorm the day before the event; among the 56,000 fans in the stadium, there were several who rode their snowmobiles to the event.

"I still get goose bumps thinking about it," Murphy said. "I don't think I've ever been colder than that."

While Murphy is obviously proud of having won a Super Bowl as a Redskins player, it doesn't compare to the excitement and gratification of winning the championship as CEO/president of a team, he said.

"In my current position . . . I understand how difficult it really is for an organization to win a championship," Murphy said.

With the NFL lockout behind them, the Packers roster back to full health and the season now in full swing, Murphy anticipates that the Packers will have more success in 2011-12.

"This year has been a trying off-season for everyone," Murphy said. "But it has been the same for everyone. . . . I'm optimistic. We have a chance to be very good."

With Murphy at the helm, a fan might conclude it will help their chances. ■



On leadership:

As Green Bay Packers President/CEO since early 2008, Mark Murphy (Iota/Colgate 1977) has given the Packers considerable off-field leadership, updating the organization's long-term strategic plan and restructuring the team's management structure and business operations, and helping to revitalize Lambeau Field with a 6,600-seat expansion that will make it the fourth largest stadium in the NFL.

It no doubt takes a lot of leadership skill to make changes in an organization as large as the Green Bay Packers, but they are skills Murphy has honed for many years along his career path. Murphy credits his former coaches, former Washington Redskins head coach Joe Gibbs and former Colgate head coach Fred Dunlap, with providing the most influence on his leadership style.

Murphy believes good leaders should surround themselves with good people, give those people the resources they need to be successful and try not micromanage them.

Murphy also believes that a good leader must be accessible, fair and sincere to people with whom he/she works.

"A lot of it is simply having good people skills, being an effective communicator and a good listener," Murphy said.

Lending a helping hand abroad

One brother's story from the front lines of Japan's worst natural disaster

BY JOHN MCCULLOUGH (DELTA OMEGA/RIPON 2007)

The quake

March 11, 2011, was just another ordinary afternoon in Soka City, about 30 miles northwest of Tokyo. The preschool where I work as a teacher had just released the majority of its students for the day, with a few staying behind for after-school daycare. I had just started my break and was at a nearby department store when I felt the first tremors of what turned out to be Japan's most powerful known earthquake in history.

Minor earthquakes are fairly common, and initially, everyone thought that this one would end within a few minutes, like the others. After 20 minutes had passed, however, we knew this was something different. Everyone tried walking to the store's exit at first, but as the horizontal waves became stronger, the larger store items began falling down and people started to run. I worked my way through the crowd and got back to my school where, thankfully, the staff and children were okay.

We managed to slowly get the children to the evacuation area. With the cell phone towers down and the trains shut down, we were quite worried because some of the children's parents worked downtown and we didn't know if the epicenter was in Tokyo or elsewhere. Fortunately, the Internet still worked and we were able to get the news from our phones. It was only later that we saw the extent of the damage to the North.

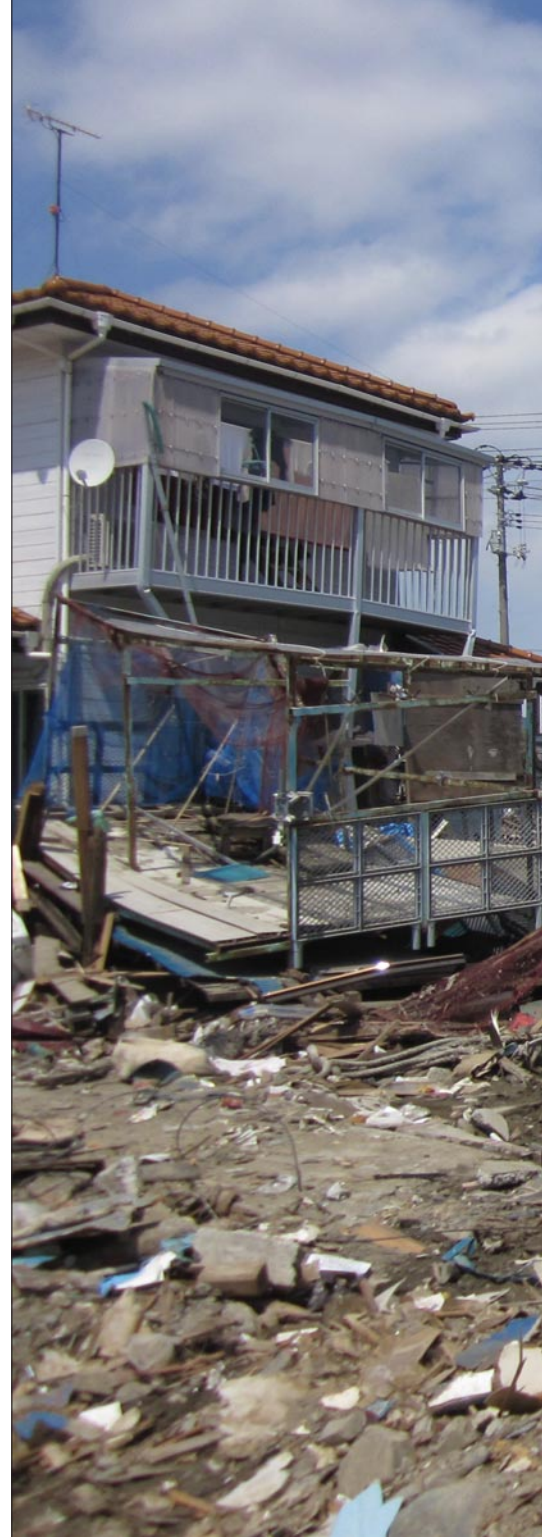
Although I was fortunate enough to live within walking distance of my school, others



John cleaning up a cinema that had been ravaged by the floodwaters of the tsunami. He is in the protective gear required during cleanup shifts.

weren't so lucky. With the trains shut down, thousands of commuters were stranded, including a good friend of mine who had to make a 5-hour hike home at night in high heels.

This was just the beginning. The next few weeks would take their toll.



The weeks after

The news that poured in was dismal and uninformative. No one could trust what was being said, because every channel was telling a different story. Abroad, in places like America, the news was full of fear-mongering and it only told half the story. When the news broke back home, my family and friends were quite scared, because they heard stories about rampant problems and food shortages in Tokyo. And because no news agency really seemed to know the true radiation readouts for Tokyo



Although I have called Japan home for close to five years now, recent events have tested that. Many other foreigners and I elected to stay and help however we can. Even to this day, Japan is still dealing with a battered North, a broken economy and the occasional aftershock.— John McCullough

and Tohoku, it seemed they fudged the facts a bit. This is one factor that led the embassies to start to panic and send warnings to their citizens.

The American Embassy advised us to prepare bug-out bags (short-term survival kits). Those who wanted to could take a flight out of Japan to a designated “safe harbor” and arrange a trip back to America from there.

Although many *gaikokujin* (foreigners) that I knew decided to go home, the thought of leaving didn’t cross my mind. I was sur-

rounded by good friends here in Japan and abroad who kept me level-headed and motivated to keep working. Besides, my preschool class was near graduation and I didn’t want to leave the country with my class unfinished.

For the few that remained, Tokyo was a very different place. Rolling blackouts had become common and the trains were unreliable. One of the most amazing differences was felt in Shibuya, home of the world’s busiest pedestrian intersection. It became a ghost town devoid of life and power.

The recovery

A few friends and I were ready to help immediately. After a great deal of research, I found a great volunteering group called Peace Boat, one of the many non-government organizations (NGOs) working in Tohoku, where the earthquake had hit hardest. We initially had trouble, because there were so many people clamoring to get into this group. Fortunately, I had previous experience volunteering in New Orleans with my Delta Omega

(continued on page 20)

brothers after Hurricane Katrina in 2005, so I was allowed in.

After signing lots of paperwork, our group was ready to go. We were to spend a week in the famous port city of Ishinomaki, one of the worst hit areas. There, we saw a world gone wrong: Boats on top of apartments, cars stuffed inside buildings and other things that will remain unmentioned.

We spent a lot of time cleaning up mud and residue left over from the tsunami that followed the quake. We had to wear special protective gear so as not to be poisoned by the toxic mud that was everywhere. Even the air was full of a terrible smell, possibly made worse by the fact that over 500 tons of fish had spilled out into the city after their storage containers were wiped out by the earthquake. We spent two days just cleaning up the fish.

It was tough work, but there were some good moments as well. One particular highlight came when we were cleaning out a soba (buckwheat noodle) restaurant. The owners, both retired, had lost their home in the tsunami and their soba shop had been barely open a year. When we arrived, they were doubtful as to whether they would consider reopening. We got to work cleaning out their restaurant and scrubbing away the toxic mud inside.

After a few hours, they came back to check on our progress. When they saw us digging out the kitchen, they broke down in tears at the sight of the mud that covered our protective gear and by the work that had been done. When we finished, they resolved to not only reopen the store, but they also wanted us to return so that they could give us free buckets of soba noodles in appreciation for our help.

A helping hand

Through all the panic and dismay, one thing that helped me keep my head clear was the idea of being able to provide a helping hand. I was also grateful to have access to social networking sites like Facebook, where I could stay in touch with brothers who wanted to help from abroad.

I was quite proud to be a member of Theta Chi up in the North. So proud, in fact, that I left our mark in Tokyo. There is a famous bar there called Popeye's Beer Bar that I donated my work helmet to. You'll find it there still on the wall with notes written from people from the North, along with our Theta Chi letters.

These days I have been working closely with Peace Boat, making presentations and talking about my time up North. I have also been giv-



ABOVE: A Japanese army truck supports an oceanside cleanup. Army units are still stationed in some cities. RIGHT: John with some of the Ishinomaki city officials. John says he chose to work with Peace Boat because they work closely with officials to determine what areas are in need of the most assistance.



ing advice to future volunteers via the Sendai Earthquake Relief Network page on Facebook that I created. It's an information page providing ways to help through charity events, volunteering information and other networking for the Tohoku region. I am also trying to recruit fellow English teachers on my return so that we can do free English lessons in the North while we volunteer.

These days, life is pretty much back to normal. Even tourists have started to return, though we are still dealing with aftershocks, as crazy as that sounds. It's slow, but life is returning to its regular pace. However, help will be needed for many years to come.

I am thankful for my brothers back home who have helped me out via the Internet and I

am thankful I was able to represent my fraternity during a dark time in Japan's history. Japan is one of my homes, and I am proud that I was able to lend a helping hand.

How to help

Brothers interested in helping the recovery efforts can find information about organizations and how you can help, both here in Tokyo, by joining the Sendai page at: www.facebook.com/groups/171572292893057?ap=1

For donations John recommends going to Peace Boat at: <http://peaceboat.jp/relief>

John's e-mail is mccloughjohn@gmail.com



TOP: John's team unloaded more than 500 tons of dead fish near the coast. Despite the substantial damage, workers couldn't stay in the area long due to the threat of more tsunamis hitting the area. ABOVE LEFT: After a long day, John rinses off the toxic mud that covered his protective gear. ABOVE RIGHT: Some of the toxic mud that had accumulated throughout Ishinomaki and other cities hit by the tsunami. The mud is actually a mix of soil, gas, oils and other materials and made it difficult for workers to move and breathe. RIGHT: John and some local musicians jamming out while waiting for a bus. A local troop of harp players came by to play songs for the cleanup team. Their instruments had been destroyed in the tsunami, so they used shovels and a CD player instead. John joined them for a rendition of "Highway to the Danger Zone" by Kenny Loggins.



you are cordially invited to join us for a great theta chi gathering. our brotherhood will focus on conducting the business of the fraternity, having fun, and building a sense of fellowship that is second to none.



The road to
SUCCESS
july 4 - july 7, 2012 starts here
THETA CHI CONVENTION 2012



Hyatt grand champions
Resort and spa
palm springs, california
www.hyattgrandchampions.com

why you want to go to convention

- You will be a part of Theta Chi's largest gathering of brothers—a tradition nearly as old as Theta Chi itself.
- You will meet and network with hundreds of Theta Chi undergraduate and alumnus brothers.
- You will get advice from other chapters and learn new ideas that really work.
- You will hear from outstanding national speakers who will share ideas that are relevant to our Fraternity and to our lives as men.
- You will discover the keys to chapter and alumni success during the School of Fraternity Practices.
- Our outstanding Alumni Track will feature the "best of the best" in ideas for chapter advisers, house corporations, and alumni associations.
- You will participate in the election of our next Grand Chapter and steer the direction of the Fraternity through our legislative process.
- You will honor Theta Chi's most outstanding chapters and brothers at the awards banquet. And, most importantly, we will celebrate that Theta Chi is for life.
- You will indulge yourself and surrender to luxury in Palm Springs, the ultimate desert playground for outdoor adventure, arts and culture, and entertainment.

what should your chapter do to plan for the convention?

Chapters should decide by January which undergraduates and alumni will be attending the Convention. There is no limit to the number of brothers that each chapter can send.

Next, the chapter must determine who will serve as the undergraduate and alumnus delegates at the Convention. The names of these two individuals must be submitted by the Secretary to the International Headquarters.

Eligible chapters may also propose legislation for consideration by the Convention and nominate alumnus members for election to the Grand Chapter. The deadline for all proposed legislation and Grand Chapter nominations is April 1, 2012.

All questions regarding Convention business should be directed to Mike Mayer, Executive Director, by e-mail at mmayer@thetachi.org or by calling 317-824-1881.



preliminary schedule of convention and sfp events

wednesday, july 4

- Registration
- Pre-Convention Educational Sessions
- SFP Opening Session and Chapter Awards
- Fourth of July Celebration

thursday, july 5

- SFP Educational Workshops and Keynote Speakers
- Official Opening of Convention
- State of the Fraternity Address

friday, july 6

- SFP Educational Workshops and Keynote Speakers
- Alumni Luncheon
- Business Meetings
- Brotherhood Gathering

saturday, july 7

- Legislative Session
- Grand Chapter Elections and Installations
- Closing Banquet and Awards

what is the convention?

Held on even-numbered years, the Convention is our largest and most important gathering of brothers. There are two major components to our Convention:

The central event of the National Convention is the meeting of delegates to discuss the business of the Fraternity. During Convention business, the Grand Chapter, one undergraduate, and one alumnus delegate from each active chapter meet to discuss and take action on resolutions, amendments to The Constitution and Bylaws, and other matters properly submitted for consideration. The Convention also elects members to the Grand Chapter.

Held in conjunction with the National Convention is the School of Fraternity Practices, an inspiring leadership and chapter operations school. This year, the SFP will feature a variety of keynote presentations, workshops, and small group discussions that study the most relevant topics facing our Fraternity and its members.

what is a convention delegate?

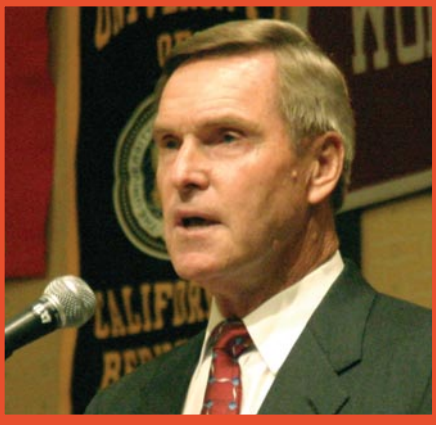
The National Convention is Theta Chi's supreme governing authority. During Convention business sessions, each chapter can be represented by up to two delegates — an alumnus and an undergraduate. Each delegate team is entitled to:

- Debate and vote on proposed resolutions and/or proposed amendments to the Fraternity's Constitution and Bylaws. Be recognized, make motions and vote on business that comes before the National Convention.
- Elect members of the Grand Chapter.

Although the Convention is open to all initiated brothers, only delegates may be recognized and debate on motions brought to the Convention floor, unless otherwise permitted by the presiding officer.

selecting your chapters's delegate

Each chapter may select its delegates in any manner it sees fit. However, chapters are urged to choose delegates based on their reliability, knowledge of current Fraternity issues, willingness to represent the chapter's best interests through debate, capacity to understand complex issues, and ability to think critically and strategically about the long-term implications and consequences of a particular action or motion. More specific information about how to select delegates, propose legislation and nominate Grand Chapter candidates will be sent out later this spring.



countdown to convention checklist

- [] **January 2012**
Decide who from your chapter will be attending
- [] **February 1, 2012**
Online registration opens
- [] **February**
Start booking your hotel rooms and flights
- [] **April 1, 2012**
Submit proposed legislation and Grand Chapter nominations to the International Headquarters
- [] **April 10, 2012**
National awards applications due to International Headquarters
- [] **May 1, 2012**
Final deadline to notify the International Headquarters of your chapter's undergraduate and alumnus delegates
- [] **May 1, 2012**
Deadline for early-bird and discounted registration
- [] **June 15, 2012**
Final registration deadline

Complete Convention details will be available at www.thetachi.org in January. Or, call the International Headquarters at 317-824-1881.

see you in california!



Delta Phi moves into new \$1.5 million home thanks to help from Norwich Housing Corporation

BY JEREME GRINSLADE, DIRECTOR OF ALUMNI AND REAL ESTATE

There are many moments worth celebrating in the course of a chapter's history. Arguably the biggest events include installation or reinstatement, major anniversaries, and homecoming; but the one that frequently stands at the top of the list is the construction of a new chapter house.

For Delta Phi Chapter at the University of North Texas, that's exactly what happened this past year. Over the last several months, Delta Phi has been busy building an approximately 15,000 sq. ft. house between Kappa Sigma and Sigma Phi Epsilon, just off Maple Street in Denton, TX. As with any construction project, the chapter has had multiple hurdles to overcome. But because of their dedicated alumni and undergraduates, Delta Phi celebrated the completion of their new home just in time for fall. The new house has 21 bedrooms (including a president's suite) and can house 41 brothers..

Even after a successful capital campaign, it was difficult for the house corporation to make up the difference in costs on its own without additional funding. However, with the support of The Norwich Housing Corporation (NHC), Delta Phi was able to secure the needed funds to build its brand new house.

As Delta Phi House Corporation President Ed Coker explained after applying for an NHC loan, "A new house represents the chapter of the past, present and future."

Many times alumni get busy with day-to-day routines and forget to sit back and remember the celebratory moments that they experienced with the Fraternity. Every alumnus is encouraged to make plans to visit their alma mater and their old home away from home. Whether you go to see a brand new house, like at Delta Phi, or to provide a little advice, now is the time to go back home. Your visit could have a positive impact on your chapter and the Fraternity for years to come. ■

Want to reconnect with your chapter? Use our Chapter Directory or e-mail ihq@thetachi.org to get started.



Delta Phi's first chapter house as it appeared in 1954. The architecture of the 1954 house provided inspiration for the design of the new house on Maple Street.



The new 14,000 square foot home for Delta Phi Chapter at the University of North Texas.



Omega/Penn State



Delta Psi/Kansas



Chi/Auburn

Providing living for today's student since 1928

Since 1928, The Norwich Housing Corporation (NHC) has had a proven track record of assisting Theta Chi house corporations with the acquisition, construction and renovation of fraternity houses for Theta Chi chapters.

With programs such as the low-interest Life Safety Loan and the Ladue Emergency Loan, the NHC is a leader among national fraternal organizations by providing funding for housing construction and renovation projects.

Housing is a key component to the Fraternity's growth and success. Working together, the NHC and Theta Chi house corporations can meet the needs of today's students and improve our ability to compete in the modern housing market.

For more information about the NHC, or to request a loan application, please contact the International Headquarters by calling 317-824-1881 or e-mailing norwich_loans@thetachi.org.



Dear brothers,

Let me begin by saying “thank you all” for your dedication and contributions to The Foundation. Without your past generosity, we would not be where we are today, a foundation with assets of about \$10 million. Over the course of the past six years, The Foundation has been able to increase its support of Theta Chi’s undergraduate and graduate brothers from a level of about \$100,000 to nearly \$400,000.

In the upcoming academic year, The Foundation’s Scholarship Committee will be able to grant 118 scholarships in amounts ranging from \$750 to \$4,500, as well as literally dozens of leadership support grants. This year we have had about \$250,000 available through the Blue and Simon funds.

Never before has the need been greater. During the 2009/2010 academic year, we received close to 130 scholarship applications. In 2010/2011, that number grew to over 180, and with the economy in its current state, we expect well in excess of 200 for 2011/2012.

In other news, The Foundation Board now consists of six members: Vice President Brad Burke (Delta Kappa/Ball State 1991), Secretary Carlton Bennett (Zeta Pi/Old Dominion 1972) and Treasurer Michael Roe (Alpha Upsilon/Nebraska 1986). They are joined by new Board members Mark Hillis (Gamma Rho/Florida State 1964) and Josh Palleon (Theta Psi/Wisconsin-Oshkosh 1999).

Our foundation staff has also grown. Gregg Puls (Delta Kappa/Ball State 1996) joined us in April as Senior Director for Development. Director of Foundation Services Vicki Wilson continues to handle the Annual Campaign and does an excellent job with our communications. Gregg will be responsible for our planned giving program and 1856 Legacy Society. In addition, he will be reaching out to our alumnus members to build relationships throughout the country.

In the spring 2011 edition of *The Rattle*, Past Foundation Chapter President James Moylan laid out a challenge for The Foundation Chapter. He challenged us to move the Theta Chi Foundation into the top 10 fraternity foundations in total assets. According to the most recent statistics regarding the foundations of other fraternal organizations, obtained from Pennington & Co., we will need to add the better part of \$2 million or more to meet that challenge. Doing so will allow us to invest more and more in our undergraduate brothers.

Over the last several years, we have had between 2,000 and 2,500 annual contributions to our annual campaign, with an average gift amount of between \$80 to \$90. We are working to grow both numbers and, with your help, we can do it. Please respond generously when our request arrives or go online to www.thetachi.org/main/foundation and make a contribution electronically.

If you have any questions, please call Gregg or Vicki at 317-824-1881 or e-mail foundation@thetachi.org.

I know each and every one of you has many Theta Chi experiences that have been important throughout your lives. Please take a moment to pay it forward and invest in our future. Also, please communicate with our staff to update our records. Whenever your e-mail address, mailing address or phone number changes, we want to know about it. After all, who knows when you might want to connect with a brother or two from your past? We may be able to help.

The Foundation will be holding receptions around the country in the coming months for our alumni. I personally look forward to meeting as many of you as possible.

Thank you for your time and commitment to Theta Chi Fraternity. Please consider The Foundation, as we have a growing need and we will invest to do much good with your contribution. I look forward to hearing from you.

Better Because of Theta Chi,



David May, Foundation Chapter President
Zeta Sigma/Wisconsin-River Falls 1970



What happened to my update?

While the editor tries his best to ensure that each edition of *The Rattle* contains relevant and timely news updates, he regrets that, due to time and space constraints, he cannot always accommodate every story that is submitted for the edition that it may have been intended for. Not all submitted stories will be selected for publication. However, readers are still asked and encouraged to notify the editor of new developments or stories by e-mailing him at rattle@thetachi.org. Contributors with time-sensitive material are asked to notify *The National Eagle*, Theta Chi's breaking news blog, by e-mailing nationaleagle@thetachi.org. The editor reserves the right to edit or omit story submissions prior to publication. Not all submitted stories will be selected for publication.

Photo by Zachary Mazin



Brothers Coffey, Mazin and Vicidomini biked 192 miles in the Pan Mass Challenge. Together, they raised \$20,000 to support cancer research.

Omicron/Richmond

Otis L. Brown (1956), president of the Longwood University Real Estate Foundation and Vice Rector of the Longwood Board of Visitors, received the Presidential Distinguished Service Award. This is the seventh time the award has been bestowed since its creation in 2000. Brown was instrumental in creating the Real Estate Foundation and has been president and director since its inception in 2004. He has also served on the Board of Visitors from 2003 to June 2011 and as Vice Rector since 2007. The resolution that accompanied the award cites the crucial role Brown played in developing Lancer Park and Longwood Landings at Midtown Square, two

Longwood-managed off-campus apartment communities.

Tau/Florida

Three Tau alumni participated in the 2011 Pan-Mass Challenge. **Chris Coffey** (2003), **Zachary Mazin** (2000) and **Vincent Vicidomini** (2002) extended the helping hand one mile at a time as they biked 192 miles over two days in August to raise more than \$20,000 for the Dana-Farber Cancer Institute in Boston. Brother Coffey began his ride in Montreal, biking a total of 600 miles in six days. The Pan Mass Challenge, in its thirty-first year, is the nation's preeminent athletic charitable fundraiser. This year, 5,200 riders raised a total of \$34 million for Dana-Farber.

Photo by Evan Wecksell



Brothers Evan Wecksell and Mike "The Miz" Mizanin meet up at the Dodgers/Giants game in time for a quick photo with their letters. Brother Mizanin threw the ceremonial first pitch.

Alpha Delta/Purdue

Dallas Mavericks player **Brian Cardinal** helped lead his team to its first NBA championship win over the Miami Heat. Brother Cardinal made a 23-foot three-point jumper in the final game of the series, with an assist from Jose Juan Barrea.

Beta Upsilon/Fresno State

Charles Martinez (2009) received a World Series ring from the San Francisco Giants as recognition for his work as a video scout for the Fresno Grizzlies, a minor league team. As a video scout, Brother Martinez is responsible for analyzing tape from Grizzlies games and recording the locations of each pitch, what the pitcher threw, and, if contact was made, the result of the hit. His work is not only used by the Grizzlies for training purposes, but also shared with the Giants for scouting and recruiting. Brother Martinez applied for the position while he was still a student attending Fresno State.

Gamma Kappa/Miami-OH

On May 18, **Mike "The Miz" Mizanin** (2003) threw out the ceremonial first pitch at Dodger Stadium as the Los Angeles Dodgers took on the San Francisco Giants. Knowing the former WWE champion would be in attendance, comedian **Evan Wecksell** (Epsilon Theta/Tufts 2001) caught The Miz's attention



More than 200 Beta Alphas and other brothers join in for a rendition of "It Is to Thee" at the founders banquet.



Lt. Col. Dick Katerndahl (1947) delivers the keynote address at the Beta Alpha founders banquet.

Beta Alpha/UCLA Commemorates 80 years

This past May, commemorating its 80th year on campus with the motto, "Eighty Years New," Beta Alpha hosted its annual Founders Day Golf Tournament. The veritable mini-convention featured over 200 guests from over 20 chapters, and from more than 20 states. Over seven decades of Theta Chis from Beta Alpha were represented.

The weekend started off with the inaugural Beta Alpha Poker Showdown on Friday night, which brought over 100 guests to the chapter house. The kickoff event allowed alumni to catch up with old friends and undergraduates to find out how truly similar they were, despite graduating decades apart. Marshal Tim Egan (2012) beat out the shrewd and savvy alumni to win the tournament, and without any prompting, generously donated his winnings to help fund the Helping Hand Scholarship for incoming UCLA freshmen.

The golf tournament went forward the next morning, following breakfast at the chapter house. Brothers Waters (1984), Dave Farkas (1984), Kerry Nicholson (1982), and Tom Reedy (1987) were back to defend the title that Waters' foursome won last year. The team of Kelly Fouch (1990), Doug Karatsu (1991), Mark Piening (1992), and Grant Withers (1993) shared the championship with Brother Waters' crew with an impressive team score of -9.

With the last round in the books, the banquet commenced. To mark the auspicious event and to support Beta Alpha's mission to become a "beacon chapter" on the West Coast, the Grand Chapter, Foundation Chapter, and The Norwich Housing Corporation were in attendance, as well as representatives

from 25 other chapters and colonies, including the Beta Iota/Arizona Colony and friendly cross-town rival Beta Tau/Southern California.

The banquet got off to a rousing start with the reading of a letter penned for the occasion by Beta Alpha's oldest living alumnus brother, Lewis Sims (1932). Brother Sims lives in Maryland and normally sends a check for \$19.31 to commemorate the founding year of Beta Alpha Chapter. This year he marked the event with this letter, read before the entire chapter, and videoed for his later viewing (<http://www.youtube.com/watch?v=w76gDeZvnSw>). Weeks later, Brother Sims was presented the Diamond Brigade recognition certificate for 75 years of membership in the Fraternity.

Brother Dick Katerndahl (1947), in full military regalia, gave an equally inspiring speech, relating how every single Beta Alpha enlisted in the military after the attack on Pearl Harbor. The room erupted in cheers when he described how the outgoing brothers left a message in the school newspaper to their rival fraternity, asking them to watch the chapter house while the brothers of Theta Chi were fighting in World War II.

Alumni Association Treasurer Scott Sutherland (1992) was awarded Beta Alpha's Frederick Norton Freeman Award for Alumni Leadership. National President Doug Allen then presented the Grand Chapter Alumni Award to Alumni Association Secretary and Founders Day Co-Chair James Sun (1992), who humbly accepted on behalf of current and past Alumni Association board members, alumni and undergraduates over the past 80 years.

The chapter exceeded its fundraising goal to fund this year's Helping Hand Scholarship via raffle tickets, a silent auction, a not-so-silent auction, and proceeds from the weekend.

The night culminated with a circle of linked brothers spanning the entire banquet hall, singing a rousing rendition of "It Is To Thee." The 80th Anniversary Weekend drew to a reluctant close with numbers exchanged, promises to see each other well before the next chapter event, and a renewed sense of purpose and loyalty among the entire Beta Alpha brotherhood.

Photo by Kyle Weaver



Brothers Kyle Weaver and Doug Chapman lent their voices to the Great Northern Union Chorus, which took home second place in the Barbershop Harmony Society's International Chorus Competition in July.

by bringing a Theta Chi t-shirt. After some pre-game festivities, Brother Mizanin met up with Brother Wecksell and the two took a quick picture together.

Gamma Rho/Florida State

Brother **Patrick Griffith** (2008) has recently published his first novel, *The Search for Artemis (the Chronicles of Landon Wicker)*. It is available on Amazon and at most major bookstores.

Epsilon Delta/Youngstown State

Two Theta Chis were selected to take part in a wreath-laying ceremony at Arlington National Cemetery in May. **David Toohey** (1998) joined YSU President Cynthia E. Anderson and other YSU representatives at the Tomb of the Unknowns at Arlington National Cemetery to honor fallen members of the United States Armed Forces. The ceremony marked the culmination of a series of YSU-sponsored events to commemorate Armed Forces Week. Brother **Jim Joseph** (2002) participated in a similar ceremony in July.

Zeta Sigma/Wisconsin-River Falls

Brothers **Kyle Weaver** (2004) and **Doug Chapman** (Zeta Delta/St. Cloud State 1959), were among the 96 members of the Great Northern Union Chorus, which took second place at the Barbershop Harmony Society's International Chorus Competition in July. The Twin Cities-based chorus fell only five points short on a scale of 3,000 of earning the international championship. The Masters of

Harmony Chorus, of Santa Fe Springs, CA, took home the gold in a field of more than 50 choruses from the United States, England, New Zealand and Sweden.

Eta Lambda/Virginia Tech

More than 100 Eta Lambda alumni, including a number of the chapter's Founding Fathers, reunited in Richmond, VA, over the weekend of March 5, 2011. The weekend's activities consisted of a meet-and-greet dinner on Friday night, a gathering to watch Virginia Tech play Clemson on Saturday afternoon, and a reunion party Saturday night. Breakfast and goodbyes on Sunday morning concluded the event.

Eta Lambdas came in from all over the United States to renew the brotherhood. In addition to the brothers and their wives/girlfriends, we had six little sisters and nine undergraduates from the chapter at Tech attend.

The grand finale Saturday night consisted of a memorabilia display and pictures "from the days," a PowerPoint presentation of the history of the chapter, re-acquainting and storytelling, and teaching the attending undergrads songs from days past. We highly recommend that alumni chapters put together one of these weekends to rekindle the fraternity spirit and brotherhood.

Eta Nu/Alma

Brian Bartes (1987) published *Life Lessons: A Guide to Creating and Living Your Best Life*. It is available online at <http://lifelessonsthebook.com>.

Eta Rho/Centenary-LA

Brent Henley (1980) published his first book, *The NeXus Initiative* in December 2010. It is available on Amazon and in most major bookstores.

Rusty Bethley (1972) won a gold medal in singles bowling at the National Senior Games 2011 Summer Games. Rusty represented his home state of Louisiana and traveled to Houston for the Games. Brother Bethley is also a member of the LSU Colony Advisory Board.

Eta Chi/George Mason

Fans of the FOX reality show, *Hell's Kitchen*, might recognize Eta Chi's **Brendan Heavey** (2003), who appeared as a contestant on the ninth and most recent season. Although demonstrating solid cooking skills, he was the second contestant to be eliminated from the competition.



Brothers Dan Fleetham, Jr. and Phil Vassar get together for a photo at a VIP reception during a benefit concert in June.

Eta Kappa/James Madison

Dan Fleetham, Jr. (Theta Chi/GC Honorary 2006) had a chance encounter with musician Phil Vassar (Eta Kappa/James Madison 1984) prior to a benefit concert on June 4. Brother Fleetham was wearing a Theta Chi polo and caught the eye of Brother Vassar, who was on his way to a VIP reception prior to the start of a benefit concert. Brother Fleetham presented Brother Vassar with a Theta Chi hat and the two brothers posed for a quick photo.

"It was great meeting him and a great benefit concert benefiting Child and Family Services of New Hampshire," Brother Fleetham said.

Dan Fleetham, Jr. is the coordinator of Theta Chi's annual Founders Day celebration at Norwich University. "[Last year's] Founders Day was a great success with over 20 brothers and guests from four chapters," he said. "We were also honored to host Ms. Barbara Sibun, the great, great granddaughter of our co-founder Arthur Chase as well as Daniel W. Fleetham Sr. (Alpha/Norwich 1934), one of Theta Chi's oldest active alumni members."

It's not too soon to start thinking about the 2012 Founders Day celebration, which will take place April 21, 2012, at Norwich University. Look for more information about Founders Day in the spring.

Brother Fleetham can be reached by e-mail at dfleethamjr@netzero.com.

Third Annual Alumni Golf Outing heads to Alabama

BY JEREME GRINSLADE, DIRECTOR OF ALUMNI AND REAL ESTATE

Nestled next to Auburn University, golf enthusiasts can find the acclaimed Grand National Golf Course, located in Opelika, AL, a part of the famed Robert Trent Jones Golf Trail. This highly praised course was the site of Theta Chi's Third Annual Alumni Golf Tournament, which took place earlier this year from April 28–30. This year's tournament was organized by Paul Norstrom (Alpha Pi/Minnesota 1986).

Despite a wave of record-breaking tornadoes only hours before, all attendees arrived safely and the tournament site was unscathed.

The three-day tournament kicked off in traditional fashion, with the highly anticipated two-man scramble par-3 competition on Grand National's picturesque 18-hole par three course. I was teamed up with veteran Theta Chi golfer George St. George (Gamma Pi/Buffalo 1970). One truly cannot describe the facial expressions of Brother St. George during the round of 18 when witnessing my erratic golf play. Despite the doubts, at the end of the day in the clubhouse, the duo of St. George and Grinslade walked away with the Par Three Competition trophy.

While Dr. Wesley Wicker (Alpha Phi/Alabama 1979) may disagree, there was actually an advantage having three Auburn graduates (Patrick O'Connor, 1978; National Chaplain Joseph Couch, 1996; and Thomas O'Connor, 2009) in attendance at this year's tournament.

On Thursday night, we headed to a local dive known for its Creole food and cheap drinks. Brother Mike Kistler (Epsilon Upsilon/Central Michigan 1974) observed that the scene was reminiscent of the establishments we knew from our college days.

The Four Man Scramble kicked off early on Friday. The play of the day did not give the Grand National's Links course justice. Obviously not distracted by the perfect weather, Brother St. George continued his winning streak and led the way once again with his precision iron play and putting, along with partners Jim Powell (Delta Pi/Indiana State 1981), Dave May (Zeta Sigma/Wisconsin-River Falls 1970) and Christian Chace (Epsilon Gamma/Widener 1998) firing a 66 (-6), topping 5 other teams in the field.

Two days of blaming the driver and putter came down to the Stroke-Play Tournament on Saturday. Brother St. George, the defending medalist, was unable to retain his iron grip on the trophy, as recent graduate Thomas O'Connor, playing with a home field advantage, carded a strong 77 on the Grand National's Lakes course. Brothers Eric Templin (Epsilon Gamma/Widener), Pat O'Connor and I witnessed Thomas seal the victory with an eagle—two on the par-four 16th hole, missing an ace by only inches.

Brother Steve Yount (Epsilon Phi/Central Missouri 1972), a well known comedian and favorite of the field, surprised everyone with his accuracy on the very difficult Lakes course and took the 2011 Championship with a net 66.

With three days of golf played and many memories made, Brother Eric Raasch (Alpha Upsilon/Nebraska 1988) summed up this weekend as a great opportunity to reconnect with brothers that he had known for years and to also establish some new friendships with brothers participating in the tournament for the first time.

SAVE THE DATE! Mark your calendars now. The 2012 Tournament will be April 26–28 once again at the Grand National. Don't wait until the week prior to plan your trip. Make arrangements now with the hotel and let them know you're bringing along an old friend to the 2012 Theta Chi Golf Tournament. Additional details will be posted in the near future at www.thetachi.org.



Theta Psi/Wisconsin-Oshkosh

Greg Matzek is the sports anchor for Wisconsin's Morning News on WTMJ and co-hosts Wisconsin Sports Weekend. He also maintains a sports blog titled "Greg Matzek: The Freak Speaks" at <http://www.620wtmj.com/blogs/gregmatzek>.



Andy Bauman (left) being presented with the Life Saving Award from the sheriff of the Las Vegas Metropolitan Police.

Iota Kappa/Northern Arizona

Officer **Andrew Bauman** (2008) was presented a Lifesaving Award by the Las Vegas Metropolitan Police for "going above and beyond the call of duty" during an incident outside a Las Vegas nightclub.

Officer Bauman was notified by a valet that a male guest was spotted "sitting precariously on the ledge of the parking structure several floors above street level." The subject was extremely intoxicated, yelling obscenities, and making gestures to the crowd gathering below. After notifying Dispatch, Officer Bauman and another officer tried to communicate with the subject.

Officers arrived on the scene and determined that the subject was either considering suicide or likely to fall off the ledge due to his intoxication. Officer Bauman climbed to the top of the garage, approached the subject from behind, grabbed him around his chest and pulled him back over the ledge and onto the floor of the garage.

Video surveillance from the garage showed that the actions Bauman took "exposed him to danger and quickly brought the subject off the ledge and into the control of the police."

This is Brother Bauman's second Lifesaving Award since joining the force four years ago. He is a Founding Father of Iota Kappa Chapter.

Where's my chapter?

Did you remember to submit your chapter news update by the published deadline? News briefs for the spring edition are always due no later than February 15 each year; the fall deadline is August 15. Not sure what to write about? News briefs typically report awards that the chapter or an individual member won, a recent philanthropic event that the chapter successfully hosted, and/or community service projects (these are just a few suggestions). We also want to know about brothers who have been elected to IFC or student government positions. Still not sure what to report on? Keeping reading below or e-mail the editor at rattle@thetachi.org.

Rho/Illinois

The brothers of Rho Chapter at the University of Illinois recently announced that they received three awards at the recent Greek Oscars—Illinois' annual Greek awards ceremony. They won first place in the categories of outstanding risk management and outstanding new member education and second place for outstanding internal operations. **Brian Kelinson** (2012) was awarded the 1872 Legacy Scholarship, given to just two underclassmen who “exhibit involvement in the Greek community, high academics, and community involvement.” Lastly, **Andrew Hughes** (2012) received the first place award for Outstanding President, recognizing him as the top president among Illinois' 47 fraternities.

Alpha Iota/Indiana

Alpha Iota achieved a 3.25 GPA in the spring 2011 semester, the third-highest GPA out of IU's 40 IFC fraternities. The brothers credit their success to their revised academic program, designed by Scholarship Chairman **Michael Goldberg** (2013) and President **Ethan Goldwasser** (2013), that included stricter study requirements, weekly grade checks for those below the chapter minimum GPA, and a renewed emphasis on academic achievement for the spring pledge class. Alpha Iota also sponsored a learning session in conjunction with the Monroe County Prosecutor to educate members about sexual assault and awareness for Greeks.

Alpha Rho/Washington

Alpha Rho brothers at the University of Washington raised \$13,000 for the Kyle Charvat Foundation—a charity that benefits those in need of assistance with cancer treatments. The 4th Annual Kyle Charvat Foundation Golf Tournament hosted more than 80 players at the Golf Club at Newcastle, just south of Seattle. One hundred percent of

the proceeds went straight to “helping young adults battling life-threatening cancer in our community,” according to a press release following the event.

Beta Iota/Arizona Colony

Layton Cox (2012) received the IFC Emerging Leader of the Year Award last semester. Also, in spring 2011, the colony performed over 300 hours of community service.

Beta Kappa/Hamline

Brothers **Jack Spirou** (2012) and **Wyatt Anderson** (2012) were elected president and vice president of Hamline University's Undergraduate Student Congress, and a number of brothers were also elected class officers for the congress. Brother **Orlando Sanchez** (2012), a member of the Hamline track team, was awarded the All-Conference Indoor Award for setting a new record in the 4x200 meter relay. The brothers celebrated the 100-year anniversary of their chapter house, which has been occupied since it was built in 1911 as the home of the Alpha Chapter of the Beta Kappa Fraternity. Beta Kappa merged with Theta Chi in 1942.

Beta Nu/Case Western

In late February, Beta Nu, led by **Raymond Zackowski**, debuted its brand new philanthropy event, “VØX,” a lip-sync competition. Participants from Case's Greek community sang and danced their hearts out for the Cleveland chapter of Habitat for Humanity. A number of brothers also participated in Case Western's Saturday of Service, completing 115 hours of service working with Food Not Bombs. Beta Nu closed out the semester with Damage, one of their most well-known events, in which the chapter invited finals-stressed students to smash cars and relieve some tension. **Nathan McKinley** (2014) was elected Vice President of Communications for the local



Photo courtesy of John Cleaver
Case Western students let off some steam during spring Finals Week at Beta Nu's annual Damage event.

Interfraternity Congress, and for the fifth consecutive year, the brothers took home the Spirit Award at Case Western's annual Greek Week.

Gamma Delta/Florida Southern

While studying abroad, brothers from Gamma Delta recently hiked to the top of Arthur's Seat, an extinct volcano in Scotland. When they got to the top, brothers **Scott Johnson** (2012), **Billy Smith** (2013), and **Kevin Parker** (2012) noticed that previous visitors would leave their mark at the peak by rearranging the volcanic rocks scattered around nearby to form a symbol or short message. The brothers followed suit and left a small Theta Chi at the peak.

Gamma Rho/Florida State

Two Theta Chis earned top honors during this year's awards ceremony at Florida State. **Drew Chiodo** (2011) was named IFC President of the Year and **Travis Rasmussen** (2011) was named Greek Man of the Year.

Gamma Phi/Nebraska Wesleyan

Macklin Warrington (2012) received the Schultz Scholarship, which is awarded to the top two students in Nebraska studying in a science-related field. He also received the STEM (Science, Technology, Engineering, and Mathematics) Scholarship, awarded to the top 50 students in the nation working toward a degree in science, technology, engineering, or mathematics education. Additionally, Gamma Phi raised over \$3,000 at the Nebraska Wesleyan Relay for Life. This was the highest amount raised by any group on campus.

Delta Zeta/Nebraska-Omaha

Theta Chi partnered with Alpha Xi Delta to win UN-O's 2011 Greek Week. **Jimmie Pinkham** (2011) was named Greek God, a title

presented to a senior fraternity member who “maintains a strong Greek image and stands by positive Greek principles while also involving himself in other Greek, campus and community organizations.”

Delta Mu/Texas

The brothers of Delta Mu recently won two awards at this year's Relay for Life. They won First Place in both the Fraternity Team and Overall Team categories.

Delta Phi/North Texas

Delta Phi Chapter was named IFC Chapter of the Year, received UNT's Involvement Cup, and was recognized for Excellence in Service and Program of the Year. Additionally, **Landry Lewis** (2011) was named President of the Year.

Epsilon Iota/East Carolina

Josh Martinkovich (2012) was elected Student Government Association president for the 2011/2012 academic year. Also, **Dan Stieh** (2012) and **Matt Wollesen** (2013) were elected to the IFC Executive Board. Brother Stieh will serve as Rush Chairman and Brother Wollesen will serve as Secretary. Lastly, Epsilon Iota reported that they earned a 3.0 GPA for the spring semester, the highest on campus.

Epsilon Kappa/Idaho

Epsilon Kappa at the University of Idaho placed second in this year's Greek Week competition. They were also named recipients of the Richard D. Gibb Award for Chapter Excellence. Applicants for the Gibb Award are evaluated on performance in nine categories, including chapter management, alumni relations, recruitment, scholarship and campus participation.

Epsilon Sigma/Wagner

Epsilon Sigma brothers celebrated their chapter's 50th anniversary on May 7, 2011, during alumni weekend. Undergraduate members and alumni shared stories and experiences, and Founding Father **George Bohsack** (1962) spoke about the chapter in its earliest years. Epsilon Sigma also earned the highest fraternity GPA and won awards for Best Brotherhood and Most Involved Greek Organization.

Epsilon Phi/Central Missouri

Epsilon Phi was named a 5-Star Chapter for 2011 and was also recognized for having outstanding chapter programming, philanthropy and community service, public relations and chapter scholarship. They also won first place in the “Epic Video Competition” and second place at the GAMMA Awards.

Zeta Beta/Adrian

Zeta Beta Chapter at Adrian College received the award for Most Involvement and Campus Leadership at this year's Greek Life banquet. **Greg Bartosch** (2011) received two major student life awards at the same ceremony: Greek Man of the Year and Adrian College 2011 Outstanding Leadership by a Male Student.

Zeta Epsilon/Long Beach State

This past spring, Zeta Epsilon Chapter earned a variety of awards, including Best Leadership Development Program, Outstanding Family Relations, Best Chapter Education Program, Best Public Relations, Best New Member Program, Overall Chapter Management, and Best Participation in Campus Organizations. **Justin Lawson** (2012) was named President of the Year, and **Stephen Thomas** (2012) was named Greek Man of the Year. Brother Thomas was also elected Associated Students, Inc. Vice President. The chapter's spring philanthropy, the Indoor Volleyball Tournament, raised \$1,100 for the American Cancer Society.

Zeta Lambda/Westminster

Fresh off their first Alter Award win, Zeta Lambda received Westminster's Life Safety Award, due in part to having every member

Photo courtesy of Spencer Reed



Iota Nu brothers having fun during USF's annual Stampede of Service, held in spring 2011.

complete CPR/AED training. The chapter also earned the highest GPA for the 2010/2011 academic year and also reported having 100 percent pledge retention this year. Their annual philanthropy, Take Back the Night, raised more than \$1,800 for the Crisis Shelter of Lawrence County.

Zeta Upsilon/Hartford

Zeta Upsilon Chapter is Hartford's IFC Chapter of the Year and had the highest new member class GPA in the fall 2010 semester. Additionally, **Daniel Arsenault** (2012) was named the 2011 Greek Man of the Year and IFC President for the 2011/2012 academic year. Joining him on IFC will be **Evan Wadsworth** (2012), who will serve as Vice President of Standards and Practices.

Eta Gamma/Morehead State

This past spring semester, Eta Gamma organized the Greek Backpack For Snacks Challenge among the fraternities and sororities on campus. Morehead's Greek organizations were asked to make and donate packs of healthy snacks and food items, which the brothers then donated to the Gateway Helping Hands Food Bank. The organization that donated the most food was awarded a \$500 cash prize from the IFC and Pan-Hellenic Councils. The brothers provided a total of 486 packages, enough for over a month's worth of help for children in grades K-12. The chapter also celebrated its 40th Founders Day Celebration on April 10th, which had record alumni and undergraduate member attendance, including four of Eta Gamma's Founding Fathers.

Eta Chi/George Mason

Grant Bollinger (2011) was elected IFC President at the end of the spring 2011 semester.

Iota Beta/Missouri State

The brothers of Iota Beta swept this year's Fraternity and Sorority Life Awards. The chapter was named Chapter of the Year, and received additional awards for having outstanding risk management, scholarship, public relations and leadership development programs. They also logged the most community service hours and earned the highest GPA among all fraternities and new members. Seven brothers earned a 4.0 GPA, the most of any fraternity at MSU. **Kyle Copeland** (2012) received the award for Outstanding Male Recruiter, and **Miles Figg** (2013) was named

Outstanding Sophomore of the Year. Iota Beta ended the spring semester having logged 1,183 community service hours and \$5,230 in philanthropic donations.

Iota Theta/Central Florida

After recruiting the help of their chapter brothers, **Shea Taylor** (2012) and **Alex Kaplan** (2011) raised approximately \$400 in support of the Burnett Honors College's inaugural year of the Senior Legacy. As thanks, Iota Theta was presented with a brick that was placed in the Honors Meditation Garden.

Iota Lambda/Longwood

Three Theta Chis now serve on the Longwood University Student Government Association Executive Council: **Brandon Fry** (2012), **Matt Hovey** (2012) and **Brian Reid** (2013) were elected president, vice president and treasurer, respectively. **Logan Miller** (2012) was elected president of the Longwood chapter of Order of Omega, and **Robert Smith** (2012) was elected to Mortar Board. **Kevin Bradtke** (2014), **Robert Smith**, and **DeeJay Drummond** (2014) each received Longwood's Citizen Leader Award; **Tyrone Brooks** (2012) and **David Palisano** (2012) helped organize the March of Dimes' March for Babies Walk event in the Farmville area. The chapter also earned the highest fraternity GPA for the spring semester.

Iota Nu/South Florida

At USF's awards presentation, **Stephan Hoda** (2012) won the Greek God Award, **Joseph Narusis** (2013) won Scholar of the Year and **Matthew Donovan** (2011) was named New Member of the Year. The chapter as a whole earned a 3.1 GPA, the second-highest in the IFC. Iota Nu also held its first philanthropy, the Chips for Children Poker Tournament, which raised \$1,000 for the Tampa Shriners Hospital for Children. The brothers logged 400 community service hours working events for the Tampa Museum of Science and Industry, Shriners Hospitals for Children and USF's Stampede of Service (shown opposite). Iota Nu celebrated its one-year anniversary earlier this spring.

We want your news!

Please send any photos, story ideas, or materials for publication, as well as address changes, to the Editor at: rattle@thetachi.org.

Iota Mu/Missouri

BY SAM YANIS (IOTA MU/MISSOURI 2013)

Many brothers often use the phrase "extend a helping hand," but in August, **Sam Yanis** extended a "helping foot" as well by walking in the 2011 Susan G. Komen 3-Day for the Cure. The three-day, 60-mile journey takes participants from Northbrook, IL, to Chicago on a mission to raise funds and awareness for breast cancer research. Brother Yanis says his aunt, whom he cheered on at last year's 3-Day, inspired him to participate this year. In preparing for the 3-Day, Sam raised more than \$2,500, surpassing his original goal of \$2,300.

With the accompaniment of his chapter brothers, training began in April during the school year. After returning to his home in Chicago's northern suburbs, Brother Yanis wanted to continue to incorporate Theta Chi in his training, so he contacted the brothers from Delta Iota Chapter at Northwestern University and arranged a practice walk from his home to the Delta Iota house in Evanston—a total distance of 13 miles.

On August 5, Sam joined approximately 100 other men and 1,800 women and embarked on his 60-mile journey, wearing his Theta Chi letters proudly. During the walk, Brother Yanis had the fortune of coming across a 78-year-old alumnus of Beta Pi Chapter at Monmouth College, who stood outside his house cheering as the walkers passed by. Sam stopped quickly to exchange pleasantries and the Grip—quite the boost to help finish the day's 22.1 total miles.

On the third day, the walkers reached downtown Chicago, along the shores of Lake Michigan. What would have been a beautiful way to finish the event was marred somewhat by the rainstorm that accompanied the walkers for four miles, but after a quick change into drier clothes, Brother Yanis proudly put on his letters and walked the last 2.2 miles.

Welcome to the redesigned *thetachi.org*

BY BART ZINO, EDITOR

In early September of this year, Theta Chi announced the launch of the new and improved *www.thetachi.org*. The launch represents the culmination of over a year's worth of research, planning, writing and editing for one of our Fraternity's most visible and frequently used resources.

In order to build the Fraternity's new online home, Theta Chi enlisted the help of SpinWeb, an Indianapolis-based web solutions firm specializing in design, usability, content management and content marketing. SpinWeb's team helped Theta Chi every step of the way, from content planning and programming, through implementation.

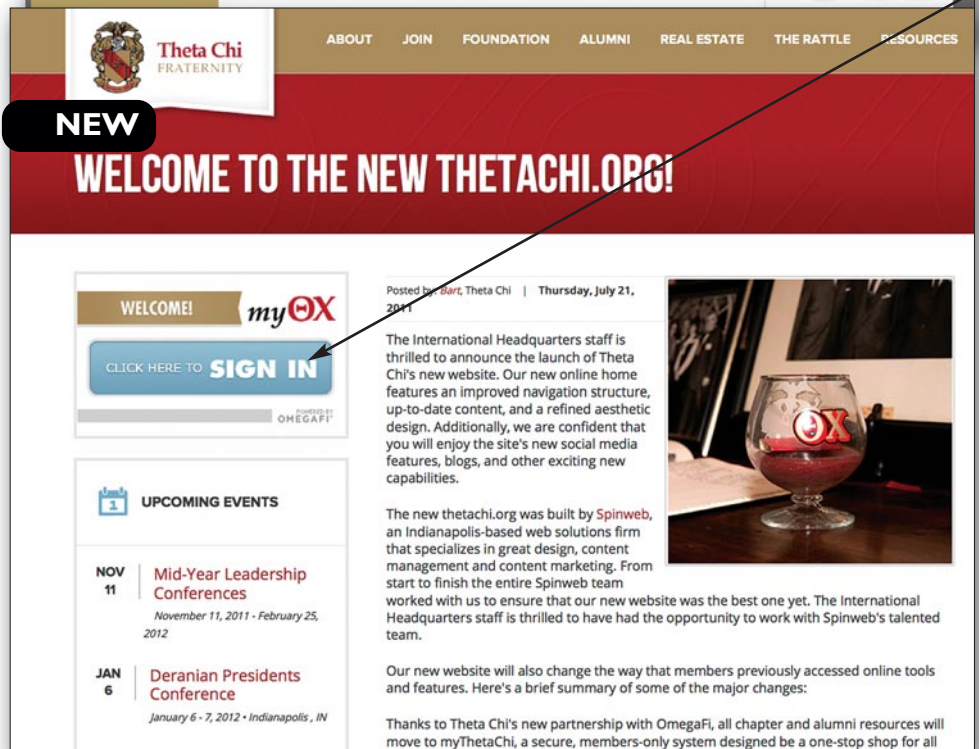
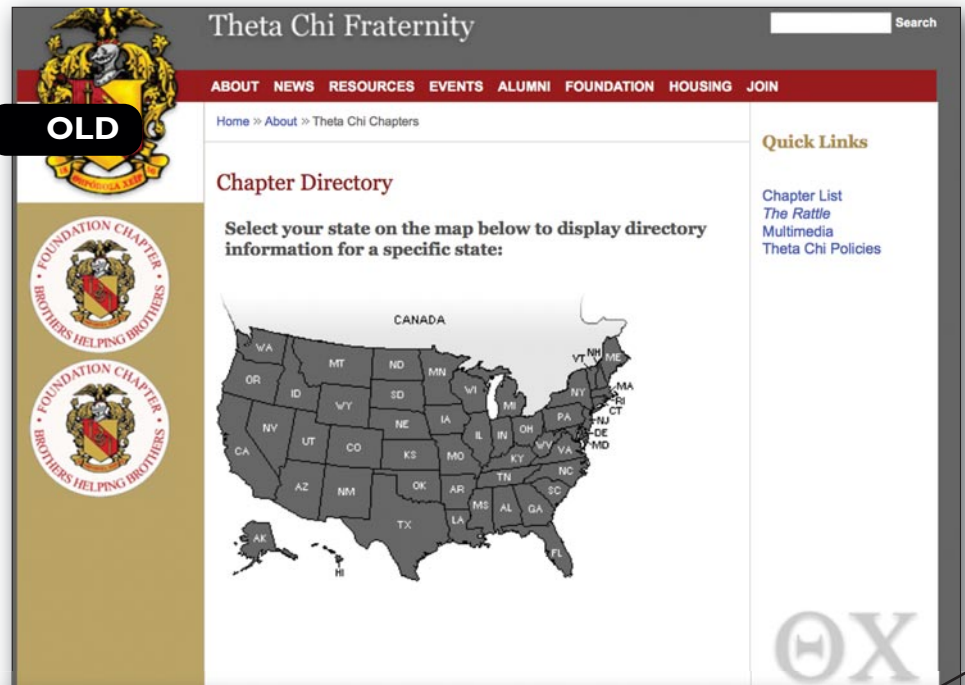
Theta Chi's new website features improved navigation, consolidated content and a sleek, updated design. From the new *thetachi.org*, visitors can now read the latest Theta Chi news on *The National Eagle* and *Holland Report*, make a gift to The Foundation Chapter or access the Fraternity's Facebook and Twitter pages. In short, the new website is designed to be your one-stop shop for all things Theta Chi.

With the new website comes new tools as well. Thanks to our new partnership with OmegaFi, all Fraternity resources—including officer and adviser manuals, Fraternity songs, and new member education materials—are now accessible online via myThetaChi, a secure, members-only area.

Through myThetaChi, undergraduates and alumni can also register for national and regional leadership events, search for chapter brothers, post announcements and much more. Chapter officers will also be able to register new members and pay Headquarters fees through the new system.

To access myThetaChi, click the "Sign In" button from any page on *thetachi.org*. Enter your username and password or click "register for access" to create your account.

We're very excited to be able to share the new *thetachi.org* with you, and hope that you will take a few minutes to explore everything that both the website and myThetaChi have to offer. If you have any questions about these upgrades, or to offer feedback, please e-mail webmaster@thetachi.org. ■

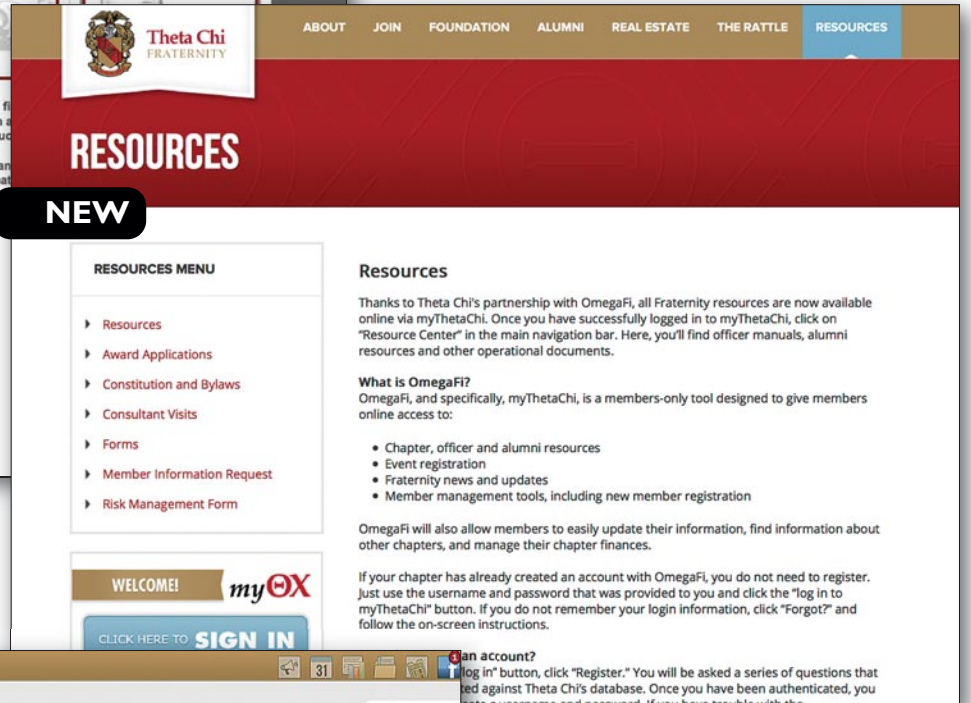


The new website features a modern, open design intended to make navigation and finding content easier. You'll also be able to log in to myThetaChi or view upcoming national and regional events from any page. Locate any Theta Chi chapter using the new and improved Chapter Directory. Need to update your chapter's directory entry? E-mail webmaster@thetachi.org.



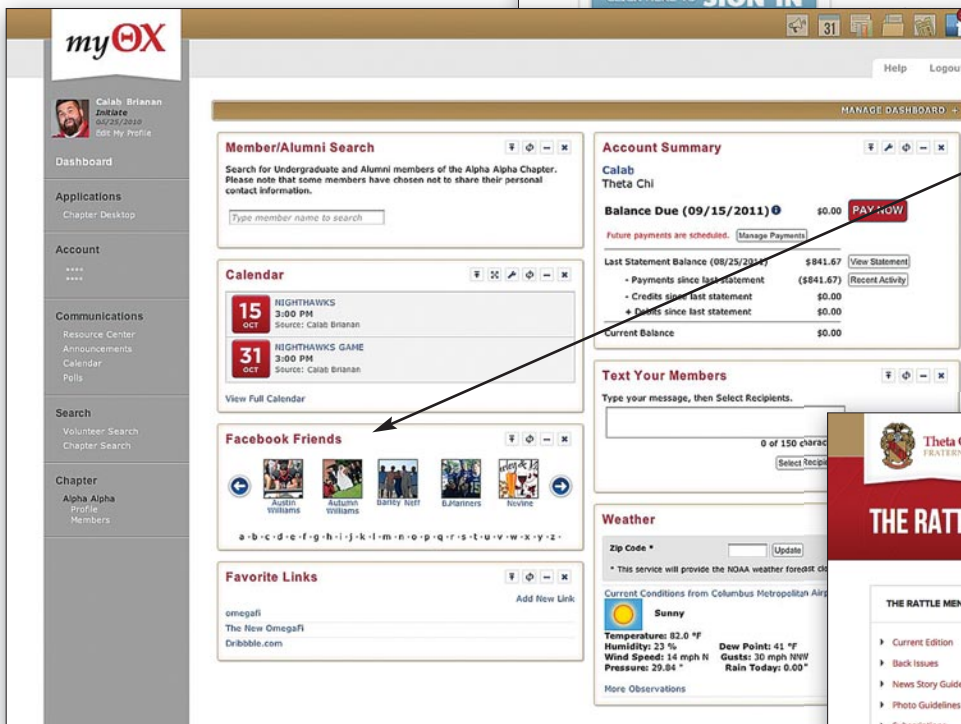
OLD

The Fraternity's resources section has moved to myThetaChi. There, you'll find officer manuals, Theta Chi songs, new member education resources and more.

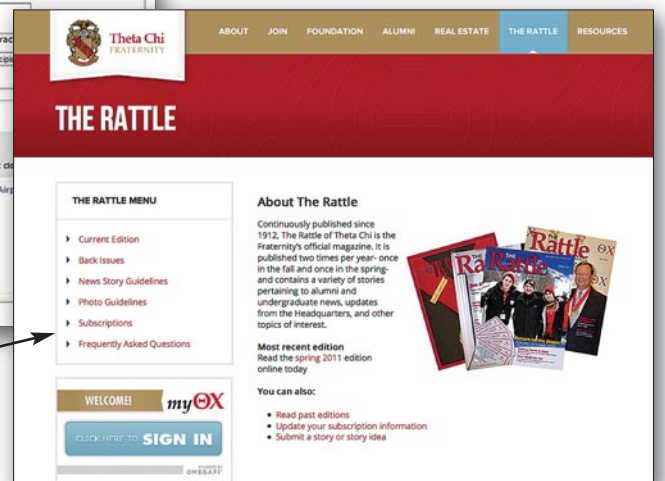


NEW

To access myThetaChi, you'll need to activate your account through OmegaFi. Click the blue "sign in" button and select "register for access" to get started.



Our website and myThetaChi are social media ready! Connect to our Facebook, Twitter and LinkedIn groups today! On myThetaChi, you can also view your account balance, download chapter resources from the Resource Center, view and post upcoming Fraternity events and search for chapter brothers.



The Rattle will remain on thetachi.org. In addition to being able to access the magazine, you'll also find resources for writers and photographers, as well as information about how to update your subscription preferences.

CHAPTER ETERNAL

ALPHA

Norwich University
Robert W. Cox, 1954

BETA

Massachusetts Institute of Technology

Peter J. Conlin, 1953
Richard M. Davis, 1951
William M. Taylor, 1962
Horace B. VanDorn, 1937

GAMMA

University of Maine
Gurdon S. Buck, 1947
Walter S. O'Connell, Jr., 1970

DELTA

Rensselaer Polytechnic Institute
Russell M. Beaumont, 1948
E. Robert Eaton, 1940
Lewis D. Hankins, 1951
Frank J. Potter, 1949

EPSILON

Worcester Polytechnic Institute
William R. McLeod, Jr., 1958

ZETA

University of New Hampshire
John R. Chapin, III, 1986
William A. Horner, 1947

THETA

University of Massachusetts
Rexford H. Avery, 1938

IOTA

Colgate University
Dr. Robert L. Edwards, 1947
Kenneth O. Froelich, 1948
John T. C. Low, 1939
Dr. David L. Mueller, 1951
Dr. Jeffrey A. Timmons, 1964
James L. Wiswall, 1948

NU

Hampden-Sydney College
William M. Dehardt, 1949

RHO

University of Illinois
Victor W. Lewkovich, 1948
George W. Ritter, 1945
Joshua M. Rymarz, 2014
Louis J. Schaumburg, Jr., 1945
Theodore D. Spurgey, 1971

SIGMA

Oregon State University
Arthur R. Anderson, 1954
Mark E. Boyden, 1946
Theo E. George, Jr., 1953
Sterling L. Hammack, Jr., 1958
Johnny A. Ielmini, 1951
Robert W. Jensen, 1938
G. Robin Koelkebeck, 1963
Gene L. Reynolds, 1945
Robert I. Ringo, 1979
George D. Shambrook, 1938
James S. Snider, 1937

TAU

University of Florida
Cpt. Robert M. Kreimer, 1959

OMEGA

Pennsylvania State University
Covelle J. Newman, 1939

ALPHA GAMMA

University of Michigan
Allyn W. Barrows, 1953

ALPHA DELTA

Purdue University
Don P. Carter, 1951
Ray J. Dearth, 1938

ALPHA EPSILON

Stanford University
John D. Hare, II, 1942

ALPHA ZETA

University of Rochester
Dr. Charles O. King, 1937

ALPHA THETA

Dartmouth College
Lee E. Bye, 1941

ALPHA MU

Iowa State University
Dr. Gordon L. Bender, 1940
Floyd T. Fawcett, 1935
Gary G. Holst, 1959
Keith W. Moburg, 1939
Edward W. Schmidt, Jr., 1948

ALPHA XI

University of Delaware
A. John Borresen, 1954
John C. Guenveur, Jr., 1951

ALPHA OMICRON

Washington State University
Bradford L. Kuiper, 1962
Harry L. Mullikin, 1951

ALPHA PI

University of Minnesota
Clarence G. Holte, 1942

ALPHA SIGMA

Oregon State University
Robert G. Lium, 1951

ALPHA TAU

Ohio University
James D. Tuverson, Jr., 1959

ALPHA UPSILON

University of Nebraska
Robert B. Gebhards, 1953

ALPHA PHI

University of Alabama
Michael D. Sanders, 1979

ALPHA CHI

Syracuse University
Richard A. Payne, 1950

ALPHA OMEGA

Lafayette College
Frederick D. Lawrence, 1938

BETA ALPHA

University of California-Los Angeles
William C. Walters, 1944

BETA GAMMA

University of North Dakota
Roy W. Finck, 1973

BETA DELTA

Rutgers University
Irving B. Cooper, Jr., 1942
Edward J. Curry, 1958
D. Herbert Davis, 1930
Elwood C. Davis, Jr., 1949

Rene B. De Russy, 1953
Philip J. Dodge, 1934
Zygmunt J. Dorosiewicz, 1948
Sydney Dufton, Jr., 1952
William E. Everitt, Jr., 1935
Dr. Jay W. Fidler, Jr., 1938
Robert E. Fisher, 1952
Daniel H. Gallagher, Jr., 1948
Frederick K. Gorgas, 1966
Oscar R. Graham, III, 1937
Julian F. Grow, 1947
Richard P. Hammell, 1944
Dr. Robison D. Harley, 1932
Arthur J. Harman, 1937
Herbert J. Haslam, 1953
Earl S. Hinehline, Jr., 1950
Randolph K. Hinz,

John W. Holdsworth, 1948
J. D. Hotchkiss, 1940
Philip A. Hurley, Jr., 1966
George E. Jeffries, 1958
David J. Kihn, 1956
Robert W. Land, 1936
Arnold M. Lehlbach, 1931
Robert J. Lehman, Jr., 1935
Frank B. McHenry, 1941
Kenneth E. Pfitzenmayer, 1952
John M. Pulliam, Jr., 1941
George M. Richardson, 1944
Eugene W. Roberts, Jr., 1938
Robert C. Ruete, 1946
Townsend J. Sausville, 1947
Scott L. Shive, 1937
Robert S. Simms, 1939
Edward N. Skipworth, 1938
Lyman R. Squier, 1955
Allen E. Stringfellow, 1946
Vincent J. Sullivan, 1940
David H. Tallman, Jr., 1956
Donald F. Trotter, 1948
Frank E. Urner, 1934
Rosario R. Versaggi, 1945
Fredrick I. Vreeland, 1932
Arthur W. Weber, 1942
David J. Westergard, 1948
John E. Wilhelm, 1958
John F. Yewell, Jr., 1944
Walter S. Yonker, 1948

Andrew J. Hutchinson, Jr., 1948
Casper R. Musselman, 1935
William D. Norlander, 1958
Samuel M. Purdy, 1947
James M. Taylor, 1964
William G. Taylor, III, 1970
Lt. Col. Earl R. Velie, 1945
Edward R. White, III, 1945
Richmond M. Wight, 1963

BETA TAU
University of Southern California
Leonard L. Berg, 1943

BETA UPSILON
California State University-Fresno
W. Velt Justeson, 1947

BETA PSI
Presbyterian College
J. Ronald Kay, 1961

GAMMA DELTA
Florida Southern College
James W. Miller, 1950

GAMMA EPSILON
Western State University
Thomas J. Canavan, III, 1990

GAMMA ETA
Bucknell University
Hubs N. Pahren, 1957

GAMMA MU
Bowling Green State University
Henry W. Covill, III, 1989

GAMMA NU
New Mexico State University
Richard E. Harkey, 1953

GAMMA RHO
Florida State University
Robert C. Ivester, 1976

GAMMA UPSILON
Bradley University
Gen. John M.D. Shalikashvili,
Fmr. Chairman, Joint Chiefs
of Staff, 1958

GAMMA PHI
Nebraska Wesleyan University
James D. Paul, 1988
Gary G. Wyckoff, 1968

GAMMA PSI
University of Puget Sound
Kenneth E. Finfrock, 1951
Warren T. White, 1950

DELTA ALPHA
Linfield College
Jeffery Basinski, 1968
Harold M. Carter, 1953
Roy E. Dancer, 1947
John R. Falconer, 1960
Daniel T. Field, 1974
Roy L. Lindsay, 1949
Wayne L. Miyamoto, 1972
Bruce A. Pickering, 1966
Loren S. Sessions, 1951
Gary D. Walls, 1964

DELTA PI
Indiana State University
Kurt J. Looft, 1996
Nick G. Oprisu, 1947

DELTA SIGMA
Lehigh University
Thomas P. Bradford, 1943
John W. Bowman, 1969
Dalton F. Brion, 1949
H. Thomas Calvert, Jr., 1952
Richard W. Flores, 1950
Roger S. Funk, 1946
Robert H. Holland, 1943
W. Boyd Hopkins, 1966
Alden G. Hoyt, Jr., 1948

DELTA SIGMA

Clarkson University
Willson C. Rich, Jr., 1954

DELTA TAU

Kent State University
Harold E. Howell, 1950
Arthur L. Kaltenborn, Jr., 1937
David L. Stone, 1967

DELTA PHI

University of North Texas
Robert C. Potter, 1962
John P. Walter, 1962

DELTA OMEGA

Ripon College
John K. Critser, 1975

EPSILON DELTA

Youngstown State University
John H. Sederland, 1964

EPSILON ETA

Indiana Pennsylvania of Pennsylvania
John W. Bonarrigo, 1960
Dean P. Fetterman, 1954
Charles R. Pote, 1957
Guy Rossetti, 1966
Jon C. Saylor, 1965

EPSILON KAPPA

University of Idaho
Derek T. Arnold, 2012

EPSILON NU

California State University-Los Angeles
Robert M. Porter, 1963

EPSILON UPSILON

Central Michigan University
Vernon L. Albrecht, 1962

EPSILON PHI

University of Central Missouri
Roger P. Carter, 1987
Randy R. Hessel, 1968
Mark A. Randazzo, 1985

ZETA BETA

Adrian College
Earl G. Laughrey, 1963

ZETA DELTA

St. Cloud State University
John C. Folkestad, 1970
Patrick J. Flynn, 1968

ZETA PI

Old Dominion University
Christopher S. Cummings, 2013

ETA ZETA

Edinboro University
Alexander Adams, 2009

THETA ZETA

University of North Carolina-Asheville
John W. Bowman, 1998

AT-LARGE

Ralph Wandling, 1929

BETA KAPPA FRATERNITY

Albin F. Todd, 1942

*former Regional Counselor



THETA CHI SPORTSWEAR & GIFTS

BY CAMPUS CLASSICS: YOUR ONLINE FRATERNITY SHOP FOR OVER 22 YEARS



A. 882142 Black Thermal. \$29.95
 B. 887596 Black & Gray Soft Shell . \$64.95
 C. 881729 Heather Gray Hoodie . . \$49.95
 D. 881761 Black Full Zip Hoodie . . \$54.95
 E. 882249 Midnight Polo \$33.95

F. 882165 Performance Tee \$21.95
 G. 882151 Traditional Symbol Tee . . \$19.95
 H. 882077 Classic Distressed Tee . . \$19.95
 I. 889420 Keepsake Mug \$12.95
 J. 889070 Bi-Fold Leather Wallet . . \$35.95

K. 884240 Classic White Hat \$18.95
 L. 88HR11 2011 Ornament \$14.95
 M. 889507 Afghan 48" x 67" \$54.95
 N. 885021 Navy Boxer Shorts \$16.95
 O. 885110 Lounge Sweatpants . . . \$32.95



FIND ALL THIS GREAT THETA CHI GEAR AND MUCH MORE ONLINE AT
WWW.CAMPUS-CLASSICS.COM
 OR CALL ONE OF OUR CUSTOMER SERVICE REPS AT 1.800.27.GREEK



PARENTS: This magazine is sent to your son's home address while he is still in college; we hope you enjoy reading it before he does. If he has left college and is not living at home, please send us his new permanent address. (Please refer to the Table of Contents.) THANK YOU!

Order your copy of the Manual today!

Own a piece of Theta Chi history with the Eighteenth Edition of *The Manual of Theta Chi Fraternity!*

The eighteenth edition is Theta Chi's most comprehensive one yet, with 14 chapters and more than 200 pages of content. The new edition also contains a detailed appendix of essential Fraternity facts and figures, historical dates, achievements and notable alumni. Read more about the new *Manual* on page 12.

Whether you're a recent graduate or have been a loyal alumnus for years, the new edition of the *Manual* is meant to be used as a resource by members not just during their college years, but for a lifetime as well.

Order your copy today for \$30 by calling the International Headquarters at 317-824-1881. Or, have your cover gold embossed with three lines of text for just \$50.

