

A  
Petition  
to the  
Grand Chapter  
of the  
Theta Chi  
Fraternity

Fred F. Bastian '22

Φ.Τ.Α.      Θ.Χ.

*Petition of*  
*Phi Tau Alpha*  
*to the*  
*Theta Chi Fraternity*  
*for the*  
*establishment of a chapter*  
*at the*  
*Pennsylvania State College*

---

*State College, Pennsylvania*  
*December 2, 1918*

**B**ELIEVING that affiliation with a well established and well reputed National Fraternity would be most desirable, and believing The Theta Chi Fraternity to possess these qualities, we, the members of The Phi Tau Alpha Fraternity of the Pennsylvania State College, do hereby respectfully petition for consideration as a Chapter of the Theta Chi Fraternity.

For the Fraternity,

*George W. F. Chapman*  
*President.*

*H. Vicharyns Puckard*  
*Secretary.*

---

*A Petition to the Grand Chapter of Theta Chi*

---



*Phi Tau Alpha House*

## HISTORY OF PHI TAU ALPHA

**I**N the spring of 1915, a group of young men who were members of the Philadelphia Northeast High School Club of the Pennsylvania State College met with the serious purpose of forming an organization which would perpetuate certain ideals and high standards of manhood which these students possessed. Arrangements were made to secure a new house which was then in the course of construction at the corner of Foster Avenue and Allen Street.

At the opening of the college year in 1915, the Northeast Club was established on a local fraternity basis. New members were selected with the greatest care and they were of the highest type. By the fall of 1917 the Club was well established and strong bonds of friendship existed among its members. Fully realizing that greater advantages could be gained by closer association with the fraternities of State College, action was taken to change the character of the organization to that of a Local Fraternity.

On February 23, 1918, permission was granted by the Fraternity Committee of the General Faculty, and The Northeast Club became The Phi Tau Alpha Fraternity. On April 6, 1918, the change was formally announced to the other Fraternities by a smoker and reception at the Chapter House. Shortly after this function, Phi Tau Alpha was admitted to the Intramural Council; this marking the final step in the official recognition by the Fraternities of The Pennsylvania State College.

---

---

*A Petition to the Grand Chapter of Theta Chi*

---

---

The Chapter House is well located for fraternity purposes, being especially constructed for the same. There are fourteen rooms affording accommodations for eighteen men. Although the house is ample for the present, a fund has already been instituted to build a new house for Phi Tau Alpha.

High scholastic standards have always been maintained and many of the Phi Tau Alpha graduate members have been elected to Tau Beta Pi, Phi Kappa Phi, and similar honorary societies. It has been well represented on the college publications, in the musical organizations, and on the athletic field. Like other Fraternities, the membership of Phi Tau Alpha has been decreased by the call to the colors and many of its men are now wearing the bars of commissioned officers.

The men are selected from all the departments of the College and Phi Tau Alpha has maintained a careful and consistent policy in the selection of its members, desiring only those men who will conform to, and further the ideals of the Fraternity and the Alma Mater.

---

---

*A Petition to the Grand Chapter of Theta Chi*

---

---

THE PENNSYLVANIA STATE COLLEGE  
STATE COLLEGE, PA.

*Office of the President*

November 18, 1918.

The organization of students of The Pennsylvania State College known as the Phi Tau Alpha Fraternity is worthy of recognition. Their members have furnished a considerable portion of officers in the United States Army. Their academic standing I believe to be above the average of the college. Their house so far as I can learn has been conducted in an orderly manner. I recommend them for membership in the Theta Chi National Fraternity.

(Signed)

EDWIN E. SPARKS.



---

---

*A Petition to the Grand Chapter of Theta Chi*

---

---

THE PENNSYLVANIA STATE COLLEGE  
STATE COLLEGE, PA.

*School of Engineering*  
*Dean's Office*

November 22, 1918.

SECRETARY, THETA CHI FRATERNITY,  
WASHINGTON, D. C.

*Dear Sir:*

Mr. E. B. Cassel advises me that a Club, formerly known as the Northeast Club and later as the Phi Tau Alpha, is applying for a charter as a chapter of the Theta Chi Fraternity.

I know Mr. Cassel personally and can assure you of his high character and exceptional standing as a student.

Two of the juniors, named Chapman and Frederickson, are in the Department of Civil Engineering and have made satisfactory records. So far as these students are concerned, I can vouch for their quality.

I believe that in general the fraternity has a good reputation for scholarship and character.

Yours truly,

(Signed)

R. L. SACKETT,

*Dean, School of Engineering.*

---

---

*A Petition to the Grand Chapter of Theta Chi*

---

---

THE PENNSYLVANIA STATE COLLEGE  
School of Agriculture and Experiment Station  
STATE COLLEGE, PA.

*Office of Dean and Director*

November 15, 1918.

MR. FREDERICK LADUE,  
Secretary, Theta Chi Fraternity,  
Washington, D. C.

*My dear Sir:*

I have been advised that the Phi Tau Alpha Fraternity of The Pennsylvania State College, which is a local Chapter, has applied for admission to the Theta Chi Fraternity, of which I understand you are Secretary.

I have known several members of this Fraternity since its organization at State College and it is a pleasure to say that we hold the members, as well as the organization which they represent, in high esteem and recommend the Chapter for admission to your National Fraternity. The men have high standing in the institution and we believe they will be a credit to your Fraternity.

Yours very truly,

(Signed)

R. L. WATTS,  
*Dean and Director.*



Beacons  
Bostons  
Fuchs

Step  
Shaw

Swedes

Zettich  
Hugill

Preppel

Pickard  
Fredrickson

Chapman

Bowdler  
McKinstry

Skorn

Oakford  
Clausel

Stamper

---

---

*A Petition to the Grand Chapter of Theta Chi*

---

---

**ACTIVE MEMBERS**

NOTE: All of the Members are enlisted either in the Students' Army Training Corps or in the Naval Unit, except three who are ineligible because of age or course of study.

**ELLWOOD B. CASSEL '19 . . . . . Philadelphia, Pa.**

*Architectural Engineering*

Tau Beta Pi Fraternity

Architectural Engineering Society

Student Member Beaux Arts Society of New York

**GEORGE W. F. CHAPMAN '20 . . . . . Philadelphia, Pa.**

*Civil Engineering*

Class Soccer Team (1, 2)

Civil Engineering Society

**CHARLES A. FREDERICKSON, JR. '20 . . . Philadelphia, Pa.**

*Civil Engineering*

Civil Engineering Society

**MURRELL D. MCKINSTRY '20 . Ivyland, Bucks County, Pa.**

*Electrical Engineering*

Bucks County Club

Deutscher Verein

**RAYMOND B. POEPEL '20 . . . . . Philadelphia, Pa.**

*Landscape Architecture*

Freshman Boxing Squad

**CLIFFORD E. BEAVAN '21 . . . . . Philadelphia, Pa.**

*Mechanical Engineering*

Freshman Basketball Squad

**FREDERICK J. FUCHS '21 . . . . . Philadelphia, Pa.**

*Civil Engineering*

Freshman Soccer Team

**A. VIEHMANN PICKARD '21 . . . . . Philadelphia, Pa.**

*Industrial Chemistry*

**WALTER E. SEGL '21 . . . . . Philadelphia, Pa.**

*Civil Engineering*

Penn State Collegian (1)

---

---

*A Petition to the Grand Chapter of Theta Chi*

---

- WALTER B. SHAW '21 . . . . . Philadelphia, Pa.  
*Electro-Chemical Engineering*  
Cerele Français
- JOHN R. SKEEN '21 . . . . . Philadelphia, Pa.  
*Agricultural Chemistry*  
Varsity Soccer (2)  
Freshman Soccer  
Freshman Track
- DONALD E. MAGILL '22 . . . . . New Hope, Pa.  
*Mechanical Engineering*
- ROBERT E. OCKFORD '22 . . . . . Philadelphia, Pa.  
*Forestry*
- WILLIAM L. SOWDEN, JR. '22 . . . . . Philadelphia, Pa.  
*Industrial Chemistry*  
Cross Country Squad
- WILLIAM A. ROSSITER '19 . . . . . Langhorne, Pa.  
*Animal Husbandry*  
Agricultural Society  
Penn State Grange
- HUGO E. ZETTERLOF '21 . . . . . Philadelphia, Pa.  
*Combustion Engineering*

PLEDGED MEMBERS

- GEORGE C. DUNCAN '22 (Victory Class) . Philadelphia, Pa.  
*Liberal Arts*
- THOMAS H. RICHARDS '22 (Victory Class) Wilkes-Barre, Pa.  
*Civil Engineering*
- RALPH D. STAUFFER '21 . . . . . Reading, Pa.  
*Civil Engineering*  
Vice President, Berks County Club
- FREDERICK F. BASTIAN '22 . . . . . Charleroi, Pa.  
*Animal Husbandry*  
S. A. T. C. Band  
College Orchestra

---

---

*A Petition to the Grand Chapter of Theta Chi*

---

---

UNDERGRADUATE MEMBERS IN  
THE SERVICE

I. GRIFFITH BROWN . . . . . Philadelphia, Pa.

*Metallurgical Engineering (Sophomore)*

College Chorus (1)  
Freshman Choir  
Glee Club (1)  
Captain, Class Lacrosse (1)  
Freshman Track  
Second Lieutenant, Aviation, A. E. F.

FRANCIS J. DOAN . . . . . Philadelphia, Pa.

*Agricultural Chemistry (Senior)*

Liebig Chemical Society  
Centro Cervantes  
Sergeant, Chemical Division

A. STEELE GUTHRIE . . . . . Indiana, Pa.

*Animal Husbandry (Sophomore)*

Cadet Private, C. O. T. C.

WILLIAM Y. LOUX . . . . . Philadelphia, Pa.

*Civil Engineering (Junior)*

Assistant Manager, Varsity Soccer (2)  
Civil Engineering Society  
Corporal, Engineers, A. E. F.

SIDNEY MORGAN . . . . . Philadelphia, Pa.

*Civil Engineering (Junior)*

Civil Engineering Society  
Private, Infantry, A. E. F.

EMIL A. PETZOLD . . . . . Philadelphia, Pa.

*Animal Husbandry (Sophomore)*

Freshman Baseball  
Private, Infantry

WALTER B. PETZOLD . . . . . Philadelphia, Pa.

*Mining Engineering (Senior)*

Mining Society  
Centro Cervantes  
Second Lieutenant, Pioneer Infantry, A. E. F.

ELLWOOD J. RITTENHOUSE . . . . . Philadelphia, Pa.

*Animal Husbandry (Senior)*

Agricultural Society  
Penn State Grange  
Sirloin Club  
Y. M. C. A. Cabinet  
Cadet Private, M. G. C. O. T. C.



---

---

*A Petition to the Grand Chapter of Theta Chi*

---

---

- ARTHUR S. ROSENBERGER . . . . . Quakertown, Pa.  
*Animal Husbandry (Junior)*  
Agricultural Society  
Penn State Grange  
Sirlain Club  
Vocational Section
- ALBERT F. SCHOEPPÉ . . . . . Philadelphia, Pa.  
*Civil Engineering (Senior)*  
Civil Engineering Society  
Deutscher Verein  
First Lieutenant, Infantry
- W. WAYNE SELTZER . . . . . Coatesville, Pa.  
*Civil Engineering (Sophomore)*  
Freshman Track Team  
Cadet Private, C. O. T. C.
- WILLIAM J. SHAW, JR. . . . . Chester Heights, Pa.  
*Horticulture (Sophomore)*  
Freshman Track Squad  
Cadet Private, C. O. T. C.
- THEODORE G. SMITH . . . . . Philadelphia, Pa.  
*Agricultural Chemistry (Junior)*  
Penn State Grange  
Vocational Section
- WINFIELDS F. SMITH . . . . . Philadelphia, Pa.  
*Industrial Chemistry (Senior)*  
Class Financial Committee (3)  
Chemical Society  
Second Lieutenant, Field Artillery
- WILLIAM C. THOMPSON . . . . . Melrose, Pa.  
*Horticulture (Senior)*  
College Orchestra (1) (2) (3)  
Penn State Grange  
Crab Apple Club  
Second Lieutenant, Infantry
- FREDERICK T. VANSANT . . . . . Philadelphia, Pa.  
*Civil Engineering (Junior)*  
Civil Engineering Society  
Second Lieutenant, Infantry
- EDWIN S. ZIEGLER . . . . . Philadelphia, Pa.  
*Electrical Engineering (Senior)*  
College Orchestra (1) (2) (3)  
Private, Infantry, A. E. F.

---

---

*A Petition to the Grand Chapter of Theta Chi*

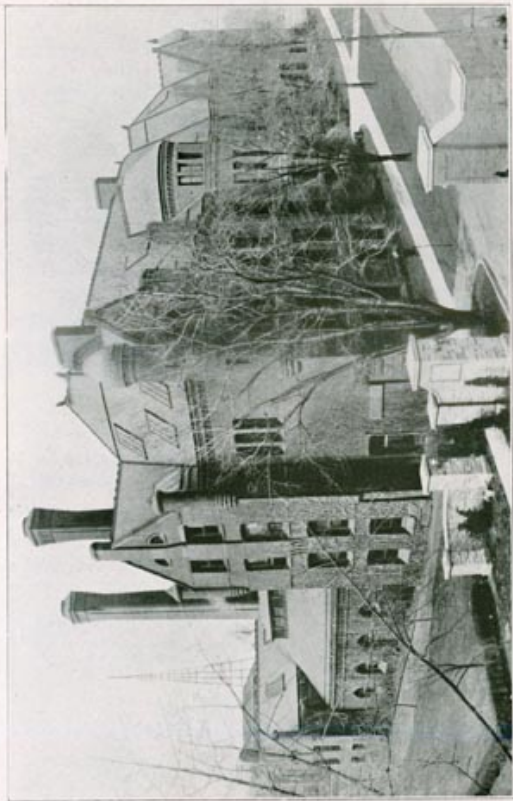
---

---

GRADUATE MEMBERS

- CARL A. BARTLE '16  
Research Engineer . . . . . Niagara Falls, N. Y.
- ALFRED R. BECHTEL '16  
Electro Chemical Engineer . . . . . Massillon, Ohio.
- NORMAN C. HORNER '16  
First Lieutenant, Engineers, A. E. F. . . . . France
- JOHN A. IRWIN '16  
Civil Engineer . . . . . Yorkship, N. J.
- ALBERT A. MAINWARING '16  
Civil Engineer . . . . . Hog Island, Pa.
- CHARLES P. MILLS '16  
Structural Draughtsman . . . . . Philadelphia, Pa.
- ROY B. NICHOLS '16  
Farmer . . . . . Bustleton, Pa.
- EMIL R. J. OLBRICH '15  
Officers' School . . . Great Lakes Naval Training Station
- FLORIAN J. OLBRICH '18  
Teaching Fellow . . . . . Iowa State College
- HENRY A. SCHELL, JR. '16  
Farmer . . . . . Sellersville, Pa.
- WILLIAM O. SCHELL '18  
Farmer . . . . . Sellersville, Pa.
- JOHN D. SCHOFIELD '16  
Second Lieutenant, Infantry, A. E. F. . . . . France
- ROBERT P. STEVENS '18  
Private, Infantry . . . . . Spartanburg, S. C.
- WILBUR E. WEST '16  
Fruit Grower . . . . . Fruitland Park, Fla.





*Main Engineering Building (Recently Damaged by Fire)*

## A SHORT HISTORY OF THE PENNSYLVANIA STATE COLLEGE

THE Pennsylvania State College was formally established under an act of Congress passed July 2, 1862, and a corresponding act of the General Assembly of Pennsylvania passed April 1, 1863. However, action looking to such an institution had been taken as early as 1855 when several public spirited citizens of the Commonwealth encouraged by the State Board of Agriculture secured a Charter from the Legislature of Pennsylvania for a "Farmers' High School."

After a number of sites were considered, the Irwin farm in Centre County was selected; one wing of a building (now Old Main) was begun; and the school was opened in February of 1859, offering a course of study leading only to the occupation of farming. A class of eleven was graduated in December, 1861, being probably the first class graduated from a purely agricultural institution in the United States.

In May following, upon application to the trustees, the Court of Centre County changed the name of the institution to "The Agricultural College of Pennsylvania."

Meanwhile petitions to Congress for National aid to higher education through gifts of public land led Congress in 1862 to pass the so called "Land Grant" Act, offering to each State and Territory under certain conditions, a gift of public land, varying in amount according to the population. From the proceeds of the sale of these lands one State College or University has been established in each State of the Union. This offer of land was accepted by the Legislature of the State of Pennsylvania in 1863 and the Agricultural College

---

---

*A Petition to the Grand Chapter of Theta Chi*

---

---

of Pennsylvania was made the recipient of the gift. In 1874 the name of the institution was changed to "The Pennsylvania State College."

Upon this broad foundation, and aided by later Federal gifts and State Appropriations, The Pennsylvania State College has developed and now maintains five individual schools of liberal and technical education. The oldest of these is the School of Agriculture, which includes departments of agricultural chemistry, agricultural education, agronomy, animal husbandry, bacteriology, botany, dairy husbandry, experimental pomology, forestry, horticulture, landscape architecture, and meteorology. There is also the Institute of Animal Nutrition. Influenced by the present industrial era, which was unforeseen when Congress took action, the "mechanic arts" gradually grew into the science of Engineering. Under this requirement, the College provides a School of Engineering, with departments of architecture, civil, sanitary, highway, electrical, mechanical, electro-chemical, and industrial engineering. A School of Mines and Metallurgy is also established. The School of Natural Science has departments of physics, zoölogy, industrial chemistry, and chemistry. Classical studies are provided by the School of Liberal Arts, including departments of English, Greek, Latin, French, Spanish, German, history, mathematics, and education. A Department of Home Economics is provided for women. The Federal requirement of "Military Taetics" is fulfilled by providing a Department of Physical and Military Education. Thus the purposes of the founders, the terms of the original charter, and the requirements of the act of Congress are fulfilled by providing a "liberal and practical education" to prepare young men and young women of the State for the several pursuits and professions of life.

---

---

*A Petition to the Grand Chapter of Theta Chi*

---

---

**LOCATION.**—In order to render the College accessible to residents of all parts of the Commonwealth, the founders chose a commanding site in Centre County almost in the exact geographical center of the State. About the College, the borough of "State College" grew up gradually and its population now numbers about three thousand people. Situated on a plateau, nearly twelve hundred feet above sea level in a broad rolling valley, the College offers a beautiful and inspiring environment, an attractive climate, and healthful surroundings.

**CAMPUS, FARMS, AND BUILDINGS.**—The College owns sixteen hundred acres of land and controls about two hundred acres additional. The larger portion is used for farming and experimental purposes; but about eighty acres are set aside as a campus, upon which are located the buildings used for instruction, administration, and residential purposes. There are also the various athletic fields, the parade grounds, and the forestry woodlots of the College. The College buildings used for instructional, experimental, and dormitory purposes are thirty-four in number, and are heated from a central heating plant. They are lighted by electricity furnished by the College power plant. The water supply is piped from a pure mountain stream several miles distant. The buildings are grouped according to the several schools into which the College is divided.

**FINANCIAL SUPPORT.**—The College is supported by the income from certain grants made by the National Government and by public taxation through appropriations of the State Legislature. The original Land Grant Act of 1862 brings the College an income of \$30,000.00 annually, to which is added under later Acts of Congress the permanent sum of \$50,000.00.

---

---

*A Petition to the Grand Chapter of Theta Chi*

---

---



*"Old Main"*



---

---

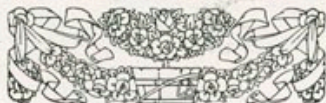
*A Petition to the Grand Chapter of Theta Chi*

---

---

These monies are available only for very limited purposes of instruction. The further sum of \$30,000.00 is received from the Federal Government for the maintenance of an Experiment Station devoted to the investigation of practical agricultural problems and the publication of results, but not to instruction. A new act passed in 1914 provides an increasing amount annually for Agricultural and Home Economics Extension Work.

Since 1887 no session of the State Legislature has failed to redeem the pledge made to the Federal Government in 1863, although no arrangement for permanent appropriation has been made. By means of private gifts, two buildings have been erected and a number of scholarships have been established, but as yet no endowment funds for general maintenance or expense have been donated.



---

*A Petition to the Grand Chapter of Theta Chi*

---



*Main Agricultural Building*

---

---

*A Petition to the Grand Chapter of Theta Chi*

---

---

FRATERNITIES AT THE PENNSYLVANIA  
STATE COLLEGE

NATIONAL FRATERNITIES

<i>Name</i>	<i>Date of Establishment</i>
Acacia (Inactive for duration of War)	June 4, 1909
Alpha Chi Rho . . . . .	June 2, 1917
Alpha Sigma Phi . . . . .	Feb. 10, 1918
Alpha Tau Omega . . . . .	Feb. 6, 1914
Beta Samach . . . . .	Feb. 10, 1914
Beta Theta Pi . . . . .	Oct. 4, 1888
Delta Tau Delta . 1872—Reestablished	Nov. 22, 1912
Delta Upsilon . . . . .	Dec. 8, 1911
Kappa Sigma . . . . .	Jan. 8, 1892
Lambda Chi Alpha . . . . .	Nov. 2, 1912
Phi Chi Delta (Latin American) . .	Dec. 18, 1912
Phi Delta Theta . . . . .	May 10, 1904
Phi Epsilon Pi . . . . .	Feb. 10, 1914
Phi Gamma Delta . . . . .	Apr. 4, 1888
Phi Kappa . . . . .	Nov. 9, 1913
Phi Kappa Psi . . . . .	Oct. 11, 1912
Phi Kappa Sigma . . . . .	Apr. 5, 1890
Phi Sigma Kappa . . . . .	June 7, 1899
Pi Kappa Alpha . . . . .	Oct. 11, 1913
Sigma Alpha Epsilon . . . . .	May 18, 1892
Sigma Chi . . . . .	Apr. 22, 1891
Sigma Nu . . . . .	Dec. 27, 1907
Sigma Phi Epsilon . . . . .	May 28, 1915
Sigma Pi . . . . .	Oct. 26, 1912
Theta Xi . . . . .	Mar. 27, 1917



---

---

*A Petition to the Grand Chapter of Theta Chi*

---

---

PROFESSIONAL FRATERNITIES

<i>Name</i>	<i>Date of Establishment</i>
Alpha Chi Sigma (Chemical) . . .	Apr. 3, 1911
Alpha Gamma Rho (Agricultural) . .	Feb. 4, 1911
Alpha Zeta (Agricultural) . . .	Jan. 21, 1898

LOCAL FRATERNITIES

Alpha Delta Sigma . . . . .	Feb. , 1911
Chi Alpha Pi . . . . .	Dec. , 1917
Cubeco Club . . . . .	Feb. 14, 1915
Iota Chi Delta . . . . .	Apr. , 1913
Omega Epsilon . . . . .	May , 1914
Phi Tau Alpha . . . . .	Feb. 23, 1918
Zeta Theta . . . . .	June 4, 1914

HONORARY FRATERNITIES

Delta Sigma Rho (Debating) . . . .	June 9, 1917
Eta Kappa Nu (Electrical) . . . .	Dec. 4, 1910
Phi Kappa Phi (Scholarship) . . . .	Mar. 23, 1900
Phi Lambda Upsilon (Chemical) . . .	May 30, 1914
Scabbard and Blade (Military) . . .	Apr. 30, 1912
Sigma Tau (Engineering) . . . . .	May 1, 1915
Tau Beta Pi (Engineering) . . . . .	May 4, 1912
Alpha Xi Sigma (Forestry) . . . . .	Apr. 30, 1916
U. L. A. S. (Landscape Architecture)	May 4, 1916

Fred. J. Vancourt '20 C.E. "Van"  
Kalter B. Shaw '21 "Lil Ronder" Ech Eng  
Emil A. Petzold .21 Hg. "Bean"  
Murrell W. McKinstry '20? E.E. "Mac."  
Ellwood B. Cassel '19. A.E. "Cass"

*William & Thimble* '19 '20 "Barnes"  
E. J. Pitterhouse 19 1/2 Ath. (Put)

Walter E. Segal '21 Hg.  
Wm G Shaw 21 1/2 "Blair"  
Robert E. Oakford L. 9 22 Bob  
George W. F. Chapman "Chap" C.E. 1920

Hindell J. Smith 19 1/2 C.E. Dred Clerk  
Chas. Frederickson, Jr. '20 C.E. Fred

Raymond Rappaport '20 Land Arch. Hg  
C. Effert & Beaman '20 M.E. Hg

Aug. E. Zittel of "Swede" Convention Eng. (Special)  
Wm L. Lowden Jr. 122 Loup H.

H. Vishman Puckard 21 "Pick" Ich  
Donald Progett '22 (Boyst) M.E.

H. Wayne Selter "Promo" '21? C.E.  
John G. Skam '21? Hg. Chem.  
Fred J. Fisher '21. Pre. Mtd (Doc. Halls)  
Fritz  
Lenningsen (Henningsen?)

Albert F. Schoppa '19 "Shap" C.E.

Maurice E. Cheney. A. E. 15 "Max"  
Ralph D. Stauffer '21 C.E. "Pat"  
Russell B. Nesbitt

